

Solid Fuel Fires, Installation, Spares & Aftercare



2011-2012

CONTENTS

SOLID FUEL FIRES

FIREBASKETS	2
ALL NIGHT BURNERS	3
SOLID FUEL KITS	3
TRIMS	4
FRETS	4
BUCKETS AND LOG BASKETS	5
FIRE SCREENS	6
COMPANION SETS	7

FLUES

FLUES	8
-------	---

INSTALLATION

FLUE PIPES	9
STOVES & FIRES	10

CHIMNEYS	11
CHAMBERS	12-13
BACKS	14
HEARTHES	15-16
BACKPANELS	17
SLIPS	18

SPARES

REPLACEMENT COMPONENTS	19
REPLACEMENT DAMPERS AND HOODS	20
REPLACEMENT ASHPANS, COVERS & KNOBS	21
REPLACEMENT BARS	22
REPLACEMENT GRATES	23
CERAMICS	24

AFTERCARE

AFTERCARE PRODUCTS	25
--------------------	----

TERMS & CONDITIONS

In the following, the "seller" means Capital Fireplaces Ltd, and the "buyer" means the person or company buying the product from the "seller".

1) NEW ACCOUNTS / PROFORMA INVOICES

New accounts may be opened upon receipt of satisfactory references from the buyer's bank and two trade suppliers and only after a minimum 12 months trading period, during which a minimum of £7,000 worth of product must have been purchased. Meanwhile, orders will be accepted and dealt with by payment made upon Proforma Invoicing.

2) TERMS:

- Account holders - Must pay in full by the end of the month following the month of invoice.
- Non account holders - Payment as per agreed schedule with the proforma invoice and will be either i) or ii) below.
 - Cash upon delivery, where an invoice will be supplied upon delivery.
 - Debit or credit card payment at any time up to delivery of goods, (accepted by telephone and at no extra cost).
- Supply of goods will be withheld if any account is not paid according to these terms, additionally the seller reserves the right to instruct a debt collection agency to recover any outstanding debts on its behalf. An additional charge of 15% of the outstanding debt will be added to the debt once the debt collection agency is instructed. Once the debt has been cleared the seller will only sell goods on a cash-on-delivery basis. The seller also reserves the right to add charges and/or interest (at the Barclays base rate plus 8%) to any account that does not comply with the specific trading terms. The seller also reserves the right to add charges and/or interest - If a cheque requires re-presentation or is returned by the bank, an administration charge of £10 will be passed on to the buyer.
- All prices are subject to VAT at the current rate.
- Any invoice queries should be made known to our accounts department by the 15th of the month at the end of which the invoice is payable.

3) RISK AND TITLE

Risk in the goods shall pass to the buyer on delivery but goods shall remain the sole and absolute property of the seller as legal and equitable owner, until the buyer has paid to the seller the agreed price. Payment by cheque shall constitute payment only on clearance of the cheque. The seller may for the purpose of recovery of its goods enter any premises where they are stored or where they are reasonably thought to be stored and repossess them. If the goods belonging to the seller are mixed with or incorporated into goods belonging to the buyer the product shall belong to the seller. If goods belonging to the seller are mixed with incorporated goods belonging to any other person the product shall be owned in common with that other person.

4) DELIVERY

- Any delivery days quoted are genuine forecasts but shall NOT be legally binding on the seller.
- Timed deliveries cannot be arranged.
- In the event of the seller being unable to supply goods subsequent to receiving an order from the buyer, the seller shall not be liable for any incidental or consequential loss.
- It is the buyer's responsibility, regardless of delivery address, to ensure the goods are as ordered and that they are of satisfactory quality.
- The seller strongly recommends that the buyer checks correct description and quantity on goods delivery notes prior to signing. In the event of any quality problem whatsoever, the buyer must notify the seller within 3 days of arrival of consignment, as stated on our delivery notes, and before the goods are processed in any way otherwise no responsibility can be accepted for any claims.
- Upon acceptance of deliveries the buyer must sign the seller's or carrier's delivery note. Claims for loss or damage must be made within 3 days of arrival of consignment informing the seller and carrier of the loss or damage involved. Damaged items and packaging must be retained for inspection. The seller shall not be held liable otherwise.
- If goods despatched from the seller, by van or other method do not arrive within 24 hours of the quoted delivery date, the seller must be notified immediately by telephone or fax.

- In all events the limits of liability for any fault or defect in the product shall be a sum not exceeding the purchase price of the particular goods, and the seller shall not be liable for any subsequent loss howsoever arising.
- The seller will not accept any liability for delays caused by "force majeure" beyond the seller's control.
- Our drivers are required to carry out a risk assessment for every delivery, should they consider that the risks associated with any delivery are too great, they may abort the delivery if alternative arrangements cannot be made with the buyer or their agents.

5) VAN DELIVERIES

Products are generally held in stock, although please check availability at the time of ordering as we cannot be held responsible for delayed fittings. Delivery is free of charge on orders over £250.00 (excluding VAT) within the seller's delivery area (South East England). A £25.00 delivery charge will be applied for orders under and including £250.00 (excluding VAT).

6) PARCEL COURIER SERVICE

(Maximum weight 20kgs Sizes should not exceed 600mm in each side).
Up to 3 day service £25.00 (orders under and including £250.00 excluding VAT).
Up to 3-day service FREE (orders over £250.00 excluding VAT).
Next Day (by 10am) £30.00.

7) PALLET LINE SERVICE

Prices start at £40.00, the buyer must confirm the price from the seller prior to despatch of the goods and confirmed to the seller by fax. Goods delivered by Courier or Palletline must be inspected, and signed for before the driver leaves, in order for us to be able to consider claims.

8) RETURNS

The seller reserves the right of discretion, to accept/or refuse the return of any goods supplied and to make a restocking charge. It is the buyer's responsibility to ensure that all goods returned are properly packed and returned in mint condition. Damaged or incomplete goods will not be accepted for credit unless a prior agreement is made. Drivers cannot accept returned goods without the correct paperwork. If upon receipt and examination of returned goods, the seller finds there is a discrepancy in the stated reason by the buyer for returning the goods, the seller reserves the right to charge in full for the goods in question.

9) SPECIAL ORDERS

The buyer is required to send to the seller, by fax or letter, confirmation of special orders customer specifications. The seller will, at the time, if possible give the buyer an estimated price and delivery date. The seller will take every reasonable care to ensure the order is to the buyer's instruction but strongly recommends the buyer visually checks the order as the seller will accept no responsibility after the 3 day period for incorrect orders delivered.

10) CANCELLATION

In any event of cancellation of any order, already delivered, the buyer will be responsible for a 20% restocking charge.

11) ERRORS AND OMISSIONS

In the event of administrative errors in the collation of the seller's price list or brochure please note that we reserve the right to amend prices without prior notification to the buyer.

12) ORDERING

By ordering and paying for products from this price list the buyer agrees to abide by the strict conditions of sale for this range, namely that these products should not be sold by the buyer on the internet or for sale to a third party who goes on to sell them on the internet. This condition will be strictly enforced and as contravention could lead to the suspension of supply if the buyer is in any doubt they should contact the seller prior to purchase. The attention of the buyer is drawn to the contract signed at the commencement of supply of this product range, the seller will have no liability for costs incurred should supply be suspended.

FIREBASKETS



SWANS NEST BLACK 24"



SWANS NEST BLACK 30"



GEORGE & DRAGON PLATE REVERSIBLE
(DECORATED & PLAIN) SHOWN WITH
SWANS NEST 30" & GOTHIC DOGS



CROMWELL BLACK 16"



CROMWELL BLACK 18"



SMALL CRADLE
(REVERSIBLE POLISHED
& BLACK)



LARGE CRADLE
(REVERSIBLE POLISHED
& BLACK)



REGENCY DOGS
AVAILABLE IN:
ANTIQUE BRASS
FINISH, BLACK, AND
HIGHLIGHT



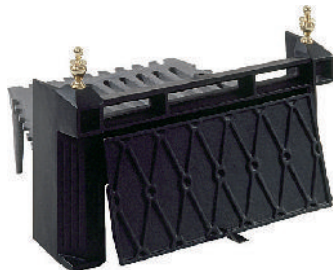
GOTHIC DOGS
AVAILABLE IN:
ANTIQUE BRASS
FINISH, BLACK, AND
HIGHLIGHT



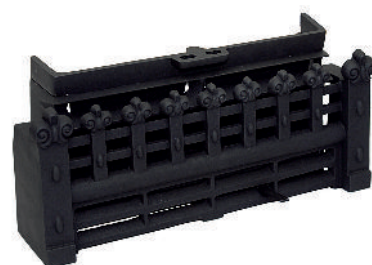
ALL NIGHT BURNERS



LATTICE ALL NIGHT BURNER BLACK 16"
(WITH BRASS & CHROME FINIALS)



LATTICE ALL NIGHT BURNER BLACK 18"
(WITH BRASS & CHROME FINIALS)



REGENCY ALL NIGHT BURNER BLACK 16"
(includes grate)

SOLID FUEL KITS



ATLANTA BLACK 16"



ATLANTA NICKEL 16"



BEACON BLACK 16"



BEACON HIGHLIGHT NICKEL 16"



JOYCE BLACK 16"



STYLE BLACK 16"

16" x 22" x 2" TRIMS



BLACK



BRUSHED



POLISHED



ANTIQUE BRASS

SOLID FUEL FRETS



CASTLE FRET BLACK 16"



N FRET BLACK 16"

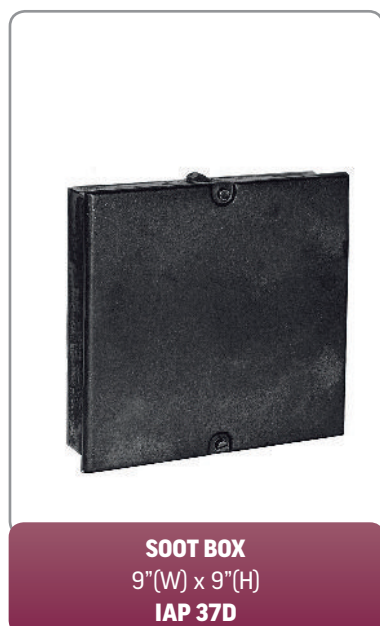


CASTLE FRET BLACK 18"



N FRET BLACK 18"

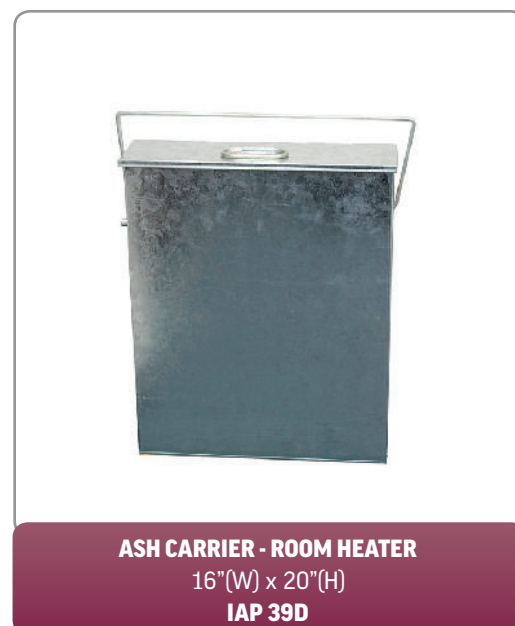
MISCELLANEOUS



SOOT BOX
9"(W) x 9"(H)
IAP 37D



ASH CARRIER - OPEN FIRE
13"(W) x 17"(H)
IAP 38D



ASH CARRIER - ROOM HEATER
16"(W) x 20"(H)
IAP 39D

BUCKETS AND LOG BASKETS



CATHEDRAL BLACK X 3
DIA: 228/254/330
CODE: 1305



SALISBURY PEWTER
DIA: 228
CODE: 1368



SALISBURY BLACK
DIA: 228
CODE: 0322



WATERLOO BLACK
DIA: 279
CODE: 0327



BAMPTON
530 (W)
CODE: 1338



LAGO GLASS
670 (W)



SAVONA GLASS
355 (W)



TANNER 0303
355 (W)



CRADLE 0302
610 (W)



RUSHDEN
530 (W)
CODE: 1336



EDGECOTT
560 (W)
CODE: 1137



LOG HOOP 0319
610 (DIA)



LOG STATION
730 (H)
CODE: 0317



HENLEY CODE
410 (H)
CODE: 1377

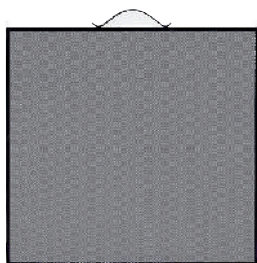


HENLEY
410 (H)
CODE: 1397

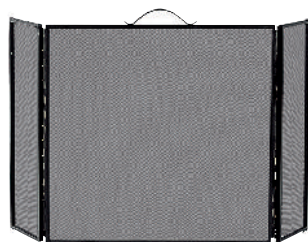


DORSET
540 (H)
CODE: 1318

FIRE SCREENS



CRUSADE BLACK (SINGLE PANEL)
609 (H) X 609 (W)
CODE: 2022



CRUSADE BLACK (3 PANEL)
609 (H) X 609 (W) X 177 PANELS
CODE: 2022



CRUSADE BLACK (CURVED)
584 (H) X 635 (W) X 127 RETURN
CODE: 2042



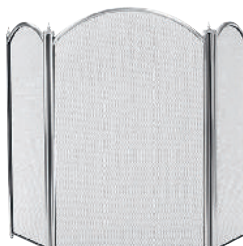
CRUSADE BLACK (SHAPED)
584 (H) X 533 (W) X 152 RETURN
CODE: 2052



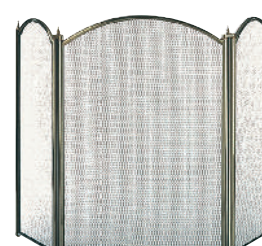
CRUSADE BLACK (4 FOLD)
635 (H) X 229 (W) PANELS
CODE: 2058



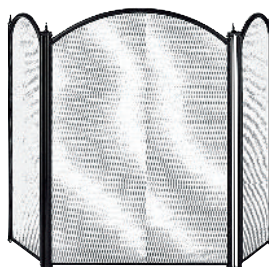
CAMBER BLACK
610 (H) X 660 (W) CODE: 2065
660 (H) X 760 (W) CODE: 2067



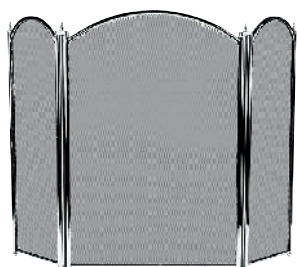
DYNASTY PEWTER (3 PANEL)
660 (H) X 431 (W)
CODE: 1228



DYNASTY ANTIQUE (3 PANEL)
660 (H) X 431 (W)
CODE: 1795



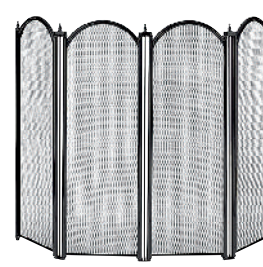
DYNASTY BLACK (3 PANEL)
660 (H) X 431 (W)
CODE: 1796



DYNASTY CHROME (3 PANEL)
660 (H) X 431 (W)
CODE: 1227



DYNASTY PEWTER (4 PANEL)
635 (H) X 203 (W) PANELS
CODE: 1230



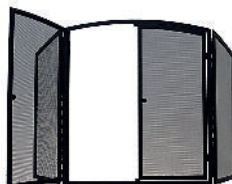
DYNASTY BLACK (4 PANEL)
635 (H) X 203 (W) PANELS
CODE: 1771



COTSWOLD BLACK (SPARK GUARD)
710 (H) X 620 (W)
CODE: 1786



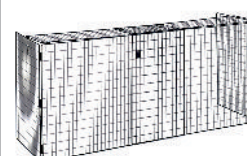
MALVERN BLACK (SPARK GUARD)
610 (H) X 520 (W) CODE: 1787
710 (H) X 610 (W) CODE: 1788



GATEWAY BLACK
760 (H) X 690 (W) X 260 (W) WINGS
CODE: 1769



WINDSOR BLACK (SPARK GUARD)
620 (H) X 530 (W)
CODE: 2001



NURSERY (EXTENDING) BLACK
950 (W) TO 1740 (W) X 660 (H)
CODE: 1992

COMPANION SETS



ASTI GLASS
670 (H)



LECCO GLASS
695 (H)



SIENNA GLASS
665 (H)



VICTORIAN BLACK
406 (H)
CODE: 1145



MANOR BLACK
558 (H)
CODE: 1065



MANOR BLACK/PEWTER
558 (H)
CODE: 1056



MANOR BLACK/BRASS
558 (H)
CODE: 1066



TEMPLE BLACK
584 (H)
CODE: 1191



VISCOUNT BLACK
635 (H)
CODE: 1190



VISCOUNT PEWTER
635 (H)
CODE: 1195



ELIPSE BLACK
540 (H)
CODE: 2105



ELIPSE PEWTER
540 (H)
CODE: 2109



VILLAGE BLACK
680 (H)
CODE: 1102



CATALAN BLACK
740 (H)
CODE: 1181



TRIO BLACK
450 (H)
CODE: 1146



TRIO PEWTER
450 (H)
CODE: 1148



TEE SET BLACK
540 (H)
CODE: 1147



TOOL SET BLACK
460 (W)
CODE: 2025

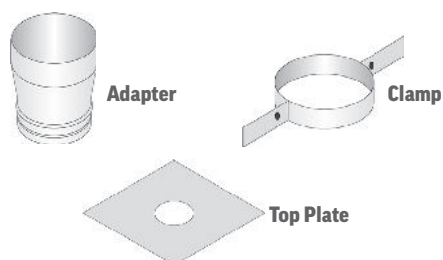
MULTIFUEL FLUE LINERS

316 TWIN WALL LINER

All products are HETAS approved and carry a CE certificate and a 10 year manufacturer's guarantee.

- Smooth inner skin resists corrosive attack due to easy drain down of condensate, less opportunity for soot collection and smooth surface for ease of sweeping
- Both inner and outer layers are made from corrosion-resistant 316L stainless steel
- Corrugated outer skin for high crush resistance
- Inner skin remains overlapping to protect the joint from corrosion penetration even at minimum bending radius
- Inner skin remains smooth and protective even after the rigours of installation

Pack Variations (All in Cardboard Box)	A	B
Pot Hangar Cowl	✓	
Rain Cap		✓
Top Plate		✓
Top Clamp		✓
Adaptor to flex	✓	✓



		A	B
125mm Diameter	5m	✓	✓
	6m	✓	✓
	7m	✓	✓
	8m	✓	✓
	9m	✓	✓
	10m	✓	✓
	11m	✓	✓
	12m	✓	✓
	13m	✓	✓
	14m	✓	✓
	15m	✓	✓

		A	B
150mm Diameter	5m	✓	✓
	6m	✓	✓
	7m	✓	✓
	8m	✓	✓
	9m	✓	✓
	10m	✓	✓
	11m	✓	✓
	12m	✓	✓
	13m	✓	✓
	14m	✓	✓
	15m	✓	✓

GAS FLUE LINERS

316 TRIPLELOCK SINGLE WALL FLEXIBLE FLUE LINER

All products are HETAS approved and carry a CE certificate and a 10 year manufacturer's guarantee.

- Made from corrosion-resistant 316L stainless steel
- Leak resistant construction
- Highest corrosion resistance
- Deep corrugations for high crush resistance and better flexibility when installing
- Strong seam construction resists the rigours of pulling the liner into place during construction

Each pack includes:

- 316 Grade Stainless Steel Flexible Liner
- Plate and Clamp
- Gas Terminal

Liner packs can be ordered in 5" or 6" diameters and in several different meter lengths. The prices (left) include free of charge delivery.



	5"	6"
5m	✓	✓
6m	✓	✓
7m	✓	✓
8m	✓	✓
9m	✓	✓
10m	✓	✓
11m	✓	✓
12m	✓	✓
13m	✓	✓
14m	✓	✓
15m	✓	✓

ALL PRODUCTS WILL BE DELIVERED FREE OF CHARGE, WITHIN 2 WORKING DAYS.

FLUE PIPES



STOVE FLUE PIPE 1 METRE LENGTH
(5" or 6")



**STOVE FLUE PIPE 1 METRE LENGTH
WITH DOOR (5" or 6")**



STOVE FLUE PIPE 0.5 METRE LENGTH
(5" or 6")



**STOVE FLUE PIPE 0.5 METRE LENGTH
WITH DOOR (5" or 6")**



STOVE FLUE PIPE 0.25 METRE LENGTH
(5" or 6")



STOVE FLUE PIPE 90° BEND
(5" or 6")



STOVE FLUE PIPE 90° BEND WITH DOOR
(5" or 6")



STOVE FLUE PIPE 45° BEND
(5" or 6")



45° BEND WITH DOOR
(5" or 6")



STOVE FLUE PIPE T PIECE
(5" or 6")



STOVE FLUE PIPE T PIECE PLUG
(5" or 6")



**STOVE FLUE PIPE 0.25 METRE LENGTH
WITH DAMPER (5" or 6")**

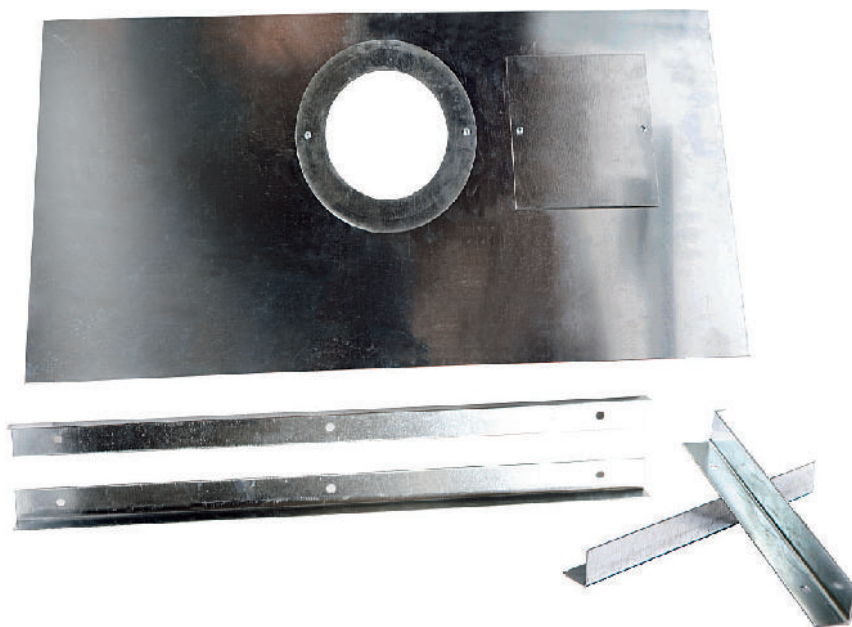


STOVE FLUE PIPE M TO M FITTING
(5" or 6")



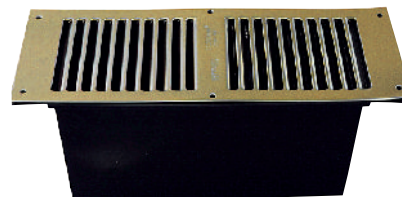
STOVE FLUE PIPE BRACKET
(5" or 6")

STOVES & FIRES

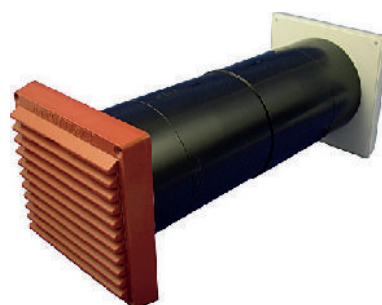


REGISTER PLATE SIZE KITS

REGISTER PLATE KIT WITHOUT ACCESS HATCH: 1220(W) x 405(H) x 1.5(D)
REGISTER PLATE KIT WITH ACCESS HATCH AVAILABLE
IN TWO SIZES: 1075(W) x 380(H) AND 810(W) x 380(H)



RYTONS FLOOR VENT IN BRASS 100cm²
(HETAS & BBA APPROVED)
IAP 41D



RYTONS 125mm AIR CORE DRILL VENT 100cm²
(HETAS & BBA APPROVED) **IAP 40D**



STOVE FIXING KIT

INCLUDES: REGISTER PLATE (ANY SIZE), 1 METRE OF FLUE PIPE (ANY SIZE)
1 ROPE KIT (IAP 24D, IAP 25D OR IAP 26D), 1 CARTRIDGE FIRE BLOCK SEAL



RYTONS FLOOR VENT IN CHROME 100CM²
(HETAS & BBA APPROVED)
???????



ROPE KIT 6mmx3m WITH ROPE FIX - IAP 24D
ROPE KIT 9mmx3m WITH ROPE FIX - IAP 25D
ROPE KIT 12mmx3m WITH ROPE FIX - IAP 26D

STOVES & FIRES



BLACK FIRE CEMENT – CARTRIDGE 300ml (PACK OF 3)
IAP 32D



WHITE FIRE CEMENT – CARTRIDGE 300ml
IAP 33D



WHITE SILICON (HEATMATE -300°) – CARTRIDGE 300ml IAP 34D
BLACK SILICON (FLUE SEAL -1000°) – CARTRIDGE 300ml IAP 44D



GEOCEL FIRE BLOCK SEAL IN GREY – CARTRIDGE 310ml
IAP 36D



**MICAFIL
VERMICULITE**



**SMOKE
PELLETS**
PACK OF 100
IAP 31D

PACK OF 6
IAP 30D



**CHIMNEY COWL TOP
(GAS ONLY)**



**CHIMNEY COWL TOP
(ALL PURPOSE)**



CHIMNEY POT 12" ROLL TOP

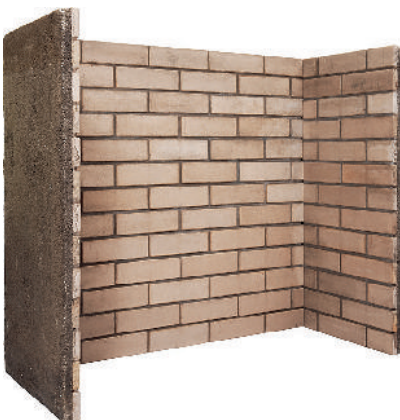
CHAMBERS



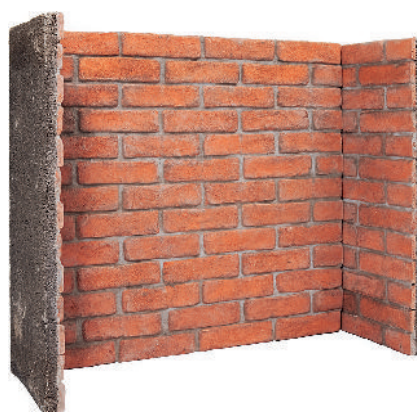
CHAMBER & RETURNS



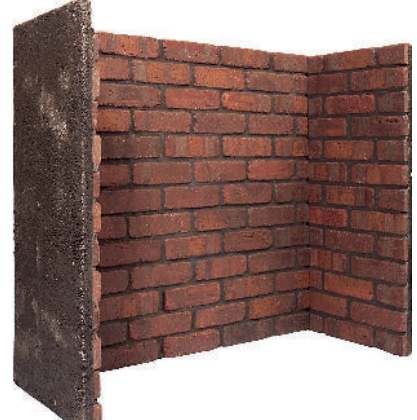
CHAMBER & RETURNS & ARCH



LONDON STOCK BRICK CHAMBER



RED BRICK CHAMBER



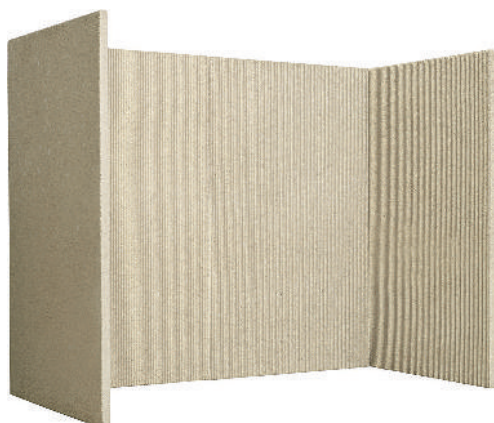
RUSTIC BRICK CHAMBER

LONDON AND RUSTIC CHAMBER: 1 x Back piece - 1015mm(W) x 1000mm(H) & 2 x Side pieces - 450mm(W) x 1000mm(H), 50mm thick

RED BRICK CHAMBER SIZES: 1 x Back piece - 950mm(W) x 900mm(H) & 2 x Side pieces - 350mm(W) x 900mm(H), 70mm thick

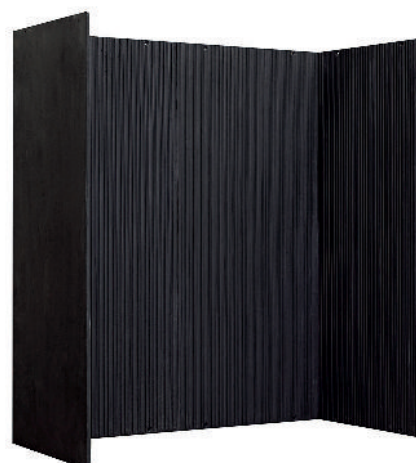
Brick chambers can also be ordered with returns (returns 110mm wide) or with an arch top (arch top 950mm(W) x 205mm (H)) - as shown above

CHAMBERS



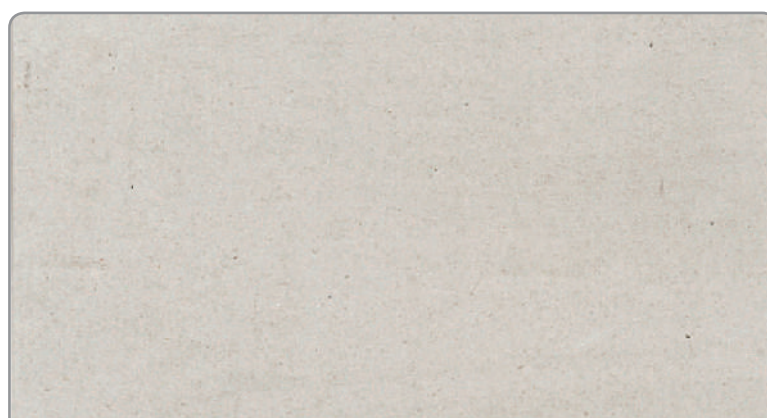
NATURAL REEDED FIREBOARD

PACK OF 2
610mm (W) x 1000mm (H) x 25mm (D)
(2 packs required to make a chamber)



CAST IRON REEDED PANELS

PACK OF 4
380mm (W) x 915mm (H) x 5mm (D)
(1 packs required to make a chamber)



FERMACELL BOARD

PACK OF 1
1200mm (W) x 1500mm (H) x 12.5mm (D)



FIREBOARD - BRICKBOND

PACK OF 1- 620mm (W) 1020mm (H) 20mm (D)
(4 sheets required to make a chamber)



FIREBOARD - HERRINGBONE

PACK OF 1- 620mm (W) 1020mm (H) 20mm (D)
(4 sheets required to make a chamber)

CHAMBERS



AGEAN LIMESTONE CHAMBER
 OPENING 635mm(W) x 635mm(H)
 965mm(W) x 985mm(H)



AGEAN LIMESTONE CHAMBER & LOW SUITE
 OPENING 660mm(W) x 329.5mm(H)
 700mm(W) x 470mm(H)



OAK VENEER BEAM (48" or 54")

BACKS



CLAY BRICK 16"



CLAY BRICK 18"



CLAY BRICK LINTEL
 FOR 16" OR 18"



CLAY REBATE BRICKS
 (SET OF 3)

HEARTH

GRANITE HONED



HEARTH INFORMATION	
Rectangular Stock Sizes (Boxed and Lipped)	48"x15", 54"x15", 56"x15", 36"x30"
Back Hearth	813 x 380 x 20 (mm)
Cut to size	£POA

GRANITE POLISHED



HEARTH INFORMATION	
Rectangular Stock Sizes (Boxed and Lipped)	36"x15", 48"x15", 51"x15", 54"x15", 54"x18", 56"x15", 60"x18"
Push Under Stock Sizes	48"x15", 54"x15"
Back Hearth	30"x6"
Cut to size	£POA

SLABBED GRANITE HONED



HEARTH INFORMATION	
Rectangular Stock Sizes (Boxed and Lipped)	48"x18", 54"x18", 56"x18"
Cut to size	£POA

SLABBED GRANITE POLISHED



HEARTH INFORMATION	
Rectangular Stock Sizes (Boxed and Lipped)	36"x18", 48"x18", 54"x18", 56"x18", 60"x18"
Cut to size	£POA

BEVELLED GRANITE POLISHED



HEARTH INFORMATION	
Rectangular Stock Sizes	54"x15"
Cut to size	Not applicable

WATERFALL GRANITE POLISHED



HEARTH INFORMATION	
Rectangular Stock Sizes	54"x15"
Cut to size	Not applicable

£POA = Price on application

HEARTH

SLATE



HEARTH INFORMATION	
Rectangular Stock Sizes (Boxed and Lipped)	36"x15", 48"x15", 51"x15", 54"x15"
Cut to size	£POA

SLABBED SLATE



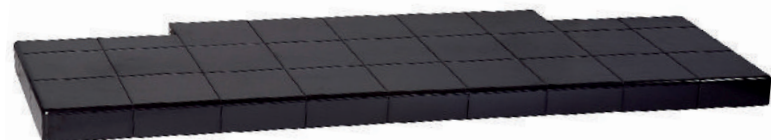
HEARTH INFORMATION	
Rectangular Stock Sizes (Boxed and Lipped)	36"x18", 48"x18", 54"x18"
Cut to size	£POA

AGEAN LIMESTONE



HEARTH INFORMATION	
Rectangular Stock Sizes (Boxed and Lipped)	48"x15", 51"x15", 54"x15", 56"x15", 60"x15"
Cut to size	£POA

BASALT TILED



HEARTH INFORMATION	
Rectangular Stock Sizes	36"x15", 48"x15", 54"x15", 54"x18"
Push Under Stock Sizes	48"x15", 54"x15"
Cut to size	£POA

RIVEN SLATE



HEARTH INFORMATION	
Rectangular Stock Sizes	36"x15", 48"x15", 51"x15", 54"x15"
Cut to size	£POA

EDGING

SEMI BULL
NOSED EDGEFULL BULL
NOSED EDGE

MATERIAL	EDGE	
GRANITE	SEMI BULL NOSED	£POA
GRANITE	FULL BULL NOSE	£POA
GRANITE HONED	SEMI BULL NOSED	£POA
GRANITE HONED	FULL BULL NOSE	£POA
SLATE	SEMI BULL NOSED	£POA
SLATE	FULL BULL NOSE	£POA

£POA = Price on application

BACKPANELS

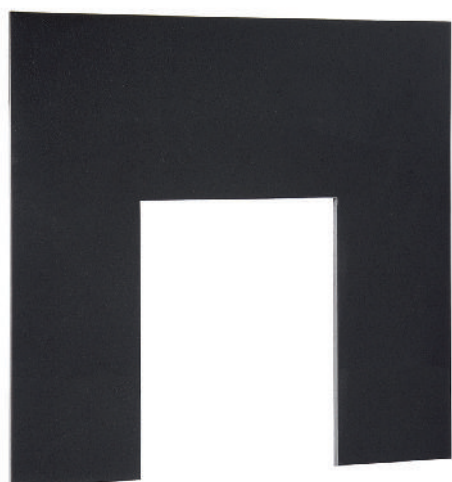


SLABBED GRANITE

POLISHED 37"x37"

16½"x22½" cut out.

Available with black or polished trims



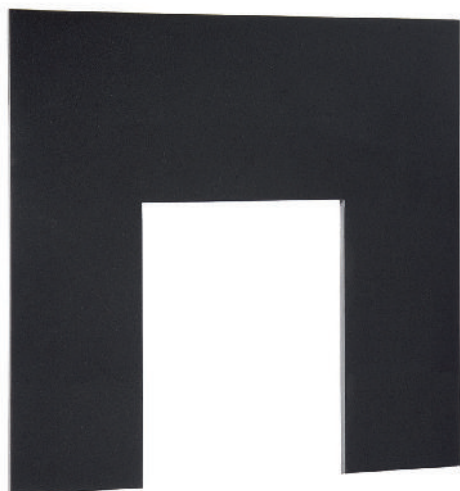
SLATE

37"x37" with 16½"x22½" cut out

37"x37" with no cut out

40"x40" with 16½"x22½" cut out

40"x40" with no cut out



GRANITE

HONED 37"x37" with 16½"x22½" cut out

POLISHED 37"x37" with 16½"x22½" cut out

POLISHED 40"x40" with 16½"x22½" cut out

POLISHED 40"x40" with no cut out

SLIPS



AVAILABLE IN: AGEAN LIMESTONE, GRANITE (POLISHED & HONED)

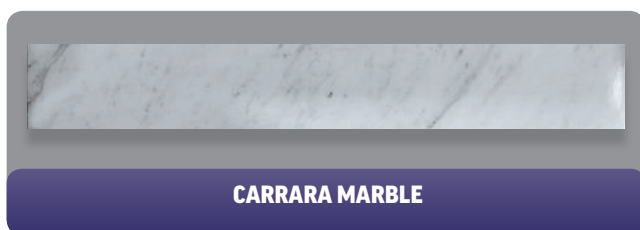
SIZE ONE: OPENING (635mm x 635mm)
1 x (940mm x 305mm) & 2 x (152mm x 635mm)
(SUITABLE FOR FIREBASKETS)

SIZE TWO: OPENING (430mm x 585mm)
1 x (940mm x 355mm) & 2 x (255mm x 585mm)
(SUITABLE FOR INSET FIRES & SMALL FIRE BASKETS)

**AGEAN LIMESTONE, GRANITE AND SLATE
AVAILABLE CUT TO SIZE - £POA**

REBATE STRIPS

SET INCLUDES: 1 @ 965 x 50 x 20 (mm), 2 @ 915 x 50 x 20 (mm)



HEARTH & BACKPANEL SETS

NAME	HEARTH SIZE	BACK PANEL	CUT OUT
MARFIL or MOCHA BEIGE MICRO MARBLE	48" or 54"	37"x37"	16½"x22½"



REPLACEMENT STOVE COMPONENTS



STOVE BRICK SETS
(for Gallery and Capital stoves) £POA



WOOD/LOG BURNING KITS
(for FF5, Sirius 405 & FF8, Sirius 545) £POA



SPARE STOVE GLASS
available in various sizes £POA

REPLACEMENT STEEL PRODUCTS - SHELVES



AVAILABLE IN 3 SIZES: 30"x4.7", 36"x6", 42"x6.3"

REPLACEMENT CAST IRON PRODUCTS - BACKS



CB2



CB4



CB7



CB8



CB38

ALL BACKS ARE SHOWN WITH DAMPER,
GRATE AND ASHPAN, WHICH ARE SOLD
AND PRICED SEPARATELY

REPLACEMENT CAST IRON PRODUCTS - DAMPERS



D2
FITS 16" BACK
Option available for gas or solid fuel



D17 GAS DAMPER
FITS GALLERY TRADITION



D19
FITS 14" BACK
Option available for gas or solid fuel



D38
FITS 16" BACK
Option available for gas or solid fuel



D4
FITS 14" SQUARE BACK
Option available for gas or solid fuel



CLOSURE PLATE
FITS 16" CLAY OR CAST BACK

REPLACEMENT CAST IRON PRODUCTS - BLACK HOODS



H3
16"(W) x 10½"(H)



H4
16"(W) x 10"(H)



H5
18½"(W) x 11½"(H)



H7
16"(W) x 10"(H)



H16
20"(W) x 10½"(H)



H17
16½"(W) x 10½"(H)



H19
16"(W) x 10"(H)



H20
16"(W) x 10"(H)



H21
13½"(W) x 10"(H)

REPLACEMENT CAST IRON PRODUCTS - ASHPANS, COVERS & KNOBS



AP2
ASHPAN FOR 16" ARCH
16½"(W) x 7"(D)



AP4
ASHPAN FOR 14" COMBINATION
13"(W) x 6"(D)



AP7
ASHPAN FOR 14" ARCH
14"(W) x 6½"(D)



AP9
TAPERED ASHPAN FOR 16" BACK - 11"(W) x 8½"(D)
(FOR USE WITH G3, G4, G5, G6, G7, G15, G16)



AP11
TAPERED ASHPAN
12½"(W) x 7½"(D)



AP14
SMALL SQUARE ASHPAN - 8"(W) x 7"(D)
(FOR USE WITH G2, G14)



AP18
TAPERED ASHPAN FOR 18" BACK
14½"(W) x 8½"(D)



A2
18½"(W) x 5½"(H)



A3
15"(W) x 4"(H)



CK2
BLACK
(PACK OF 12)



CK2
POLISHED
(PACK OF 12)

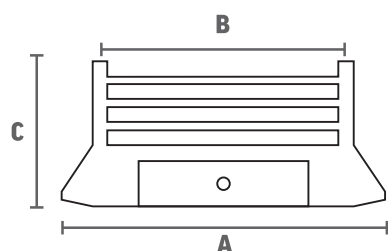


CK4
BLACK
(PACK OF 12)

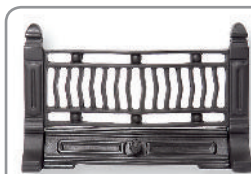


CK4
POLISHED
(PACK OF 12)

REPLACEMENT CAST IRON PRODUCTS - BARS

**DIMENSIONS**

- A** Maximum Width
B Width between centre of uprights
C Height



B1
 FREE STANDING
 A:18" B:16½" C:11½"



B3
 FREE STANDING
 A:21" B:17½" C:10½"



B5F
 FREE STANDING
 A:19½" B:16½" C:10½"



B9F
 FREE STANDING
 A:22" B:17½" C:12"



B10
 HOOK ON
 A:20" B:15" C:10½"



B12
 HOOK ON
 A:21" B:19½" C:13"



B13
 BOLT ON
 A:15½" B:14" C:5"



B14
 BOLT ON
 A:19" B:17" C:5"



B15
 FREE STANDING
 A:16" B:14½" C:10½"



B16
 FREE STANDING
 A:13½" B:12½" C:10½"



B18
 HOOK ON
 A:21" B:17" C:11½"



B23
 FREE STANDING
 A:14" B:13" C:10"



B24
 FREE STANDING
 A:18½" B:15½" C:10"



B25
 FREE STANDING
 A:22½" B:20½" C:11"



B26
 FREE STANDING
 A:20½" B:18" C:11"



B27
 HOOK ON
 A:16½" B:15" C:10½"



B28
 HOOK ON
 A:18" B:17" C:11"



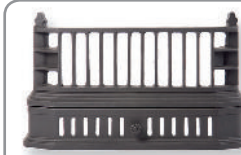
B29
 HOOK ON
 A:17½" B:16½" C:10"



B30
 HOOK ON
 A:18" B:17" C:10"



B31
 HOOK ON
 A:19" B:17" C:10½"



B40
 HOOK ON
 A:20" B:17" C:12"



B46
 HOOK ON
 A:14" B:13" C:10"



B47
 HOOK ON
 A:17½" B:16" C:10"



B48
 HOOK ON
 A:16" B:14½" C:10"



B49
 HOOK ON
 A:18" B:16½" C:10"



B50
 HOOK ON
 A:20" B:19" C:9½"

REPLACEMENT CAST IRON PRODUCTS - GRATES

All grates are measured at their widest point and dimensions are to the nearest ½"

**G2**

(FOR USE WITH AP14 ASHPAN)
12½"(W), FOR 14" BACK

**G3**

(FOR USE WITH AP9 ASHPAN)
14½"(W), FOR 16" BACK

**G4**

(FOR USE WITH AP9 ASHPAN)
16"(W), FOR 18" BACK

**G5**

(FOR USE WITH AP9 ASHPAN)
15"(W), FOR 16" BACK
(coal saver included)

**G6**

(FOR USE WITH AP9 ASHPAN)
15"(W), FOR 18" BACK
(coal saver included)

**G7**

(FOR USE WITH AP9 ASHPAN)
15"(W), FOR 16" BACK

**G12**

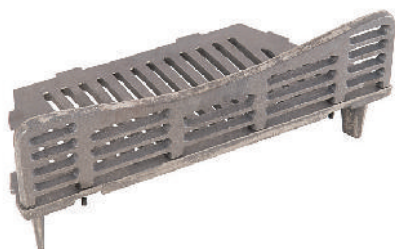
15"(W), FOR 16" BACK
(coal saver included)

**G14**

(FOR USE WITH AP14 ASHPAN)
12½"(W), FOR 14" BACK

**G15**

(FOR USE WITH AP9 ASHPAN)
15"(W), FOR 16" BACK
(coal saver included)

**G16**

(FOR USE WITH AP9 ASHPAN)
17"(W), FOR 18" BACK
(coal saver included)

**G38**

(FOR USE WITH AP38 ASHPAN)
17"(W), FOR 16" BACK

CERAMICS FOR GAS FIRES



16" MAGNETIC HOT BOX RIBBED



CHARCOAL
(BOX OF 16)



COAL
SMALL (BOX OF 50)
MEDIUM (BOX OF 50)
LARGE (BOX OF 50)



CONVECTOR FIRE PEBBLE KIT
(available for class 1 & class 2)



DRIFTWOOD
(BOX OF 16)



FIREWOOD
(BOX OF 16)



FIREBASKETS & SUNKEN BURNER
(18 PIECES)
HOLE IN THE WALL FIRES
(12 OR 15 PIECES)



LOGS
SMALL 6" (BOX OF 8)
MEDIUM 8" (BOX OF 8)
LARGE 12" (BOX OF 4)



PEBBLES
(BOXES OF 30) MIXED SIZES

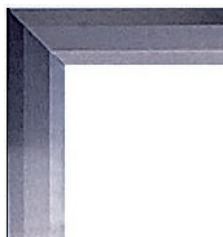
MAGNETIC TRIMS FOR GAS & ELECTRIC FIRES



MAGNETIC TRIM
ANTIQUE BRASS



MAGNETIC TRIM
BLACK



MAGNETIC TRIM
BRUSHED STEEL



MAGNETIC TRIM
DIAMOND BLACK



MAGNETIC TRIM
POLISHED

AFTERCARE PRODUCTS



COAL PAINT 300ml
(PACK OF 6)
IAP 01D



SLATE OIL 100ml
(PACK OF 6)
IAP 02D



BLACK STOVE & GRATE POLISH
75g TUBE (PACK OF 6)
IAP 03D



GLASS CLEANER 320ml
(PACK OF 6)
IAP 04D



STOVE PAINT 450ml
(PACK OF 6)
IAP 06D



MULTI METAL POLISH 150g TUBE
(PACK OF 6)
IAP 10D



ROPE ADHESIVE 50ml
(PACK OF 6)
IAP 13D



FLUE FREE
IAP 21D



STONE SEALER 500ml
(SINGLES)
IAP 27D

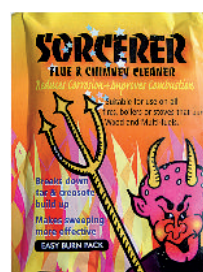


STONE STAIN CLEANER
(PACK OF 6)
IAP 28D



HEAT
APPROVED

CO DETECTOR CARBON MONOXIDE ALARM
(requires 3x AA batteries, batteries are supplied)
IAP 43D



SORCERER
(PACK OF 12)
IAP 35D





capital
fireplaces

Unit 12-17, Henlow Trading Estate, Henlow Camp, Bedfordshire SG16 6DS
Tel: **01462 813138** Freefax: **0800 980 4847** Website: **www.capitalfireplaces.co.uk**
Registered in England: 3556315