



The Easby 48" in Portuguese Limestone

Fire: Glass fronted gas convector (slide control) with ceramic coals & Flare Fireframe polished

Acombe 48" with Ambient Lighting



The Acombe 48" in Barley White with Ambient Lighting

Fire: Open fronted gas convector (manual control) with ceramic coals & Capella Fireframe bronze finish



The Acombe 48" in Mocha Beige with Ambient Lighting

Fire: Glass fronted gas convector (slide control) with ceramic coals & Provident Fireframe highlight



The Acombe 48" in Perla with Ambient Lighting

Fire: Gradient glass fronted gas convector (slide control) with ceramic coals, Gradient trim satin steel & 16" Bauhaus fret polished

Belmonte 42"



The Belmonte 42" in Barley White

Fire: Open fronted gas convector (slide control) with ceramic coals, antique brass finish trim & 16" Bauhaus fret



The Belmonte 42" in Mocha Beige

Fire: Decorative open fronted gas with ceramic coal, diamond black trim & 18" Bauhaus fret



The Belmonte 42" in Portuguese Limestone

Fire: Open fronted gas convector (manual control) with ceramic coals & Capella Fireframe polished



The Belmonte 48" in Barley White

Fire: Decorative open fronted gas with ceramic coals, black trim & 18" Bauhaus fret

Belmonte 48"



The Belmonte 48" in Mocha Beige
(Shown without the shelf)

Fire: Glass fronted gas convector (slide control) with ceramic coals & Mizar Fireframe polished



The Belmonte 48" in Portuguese Limestone

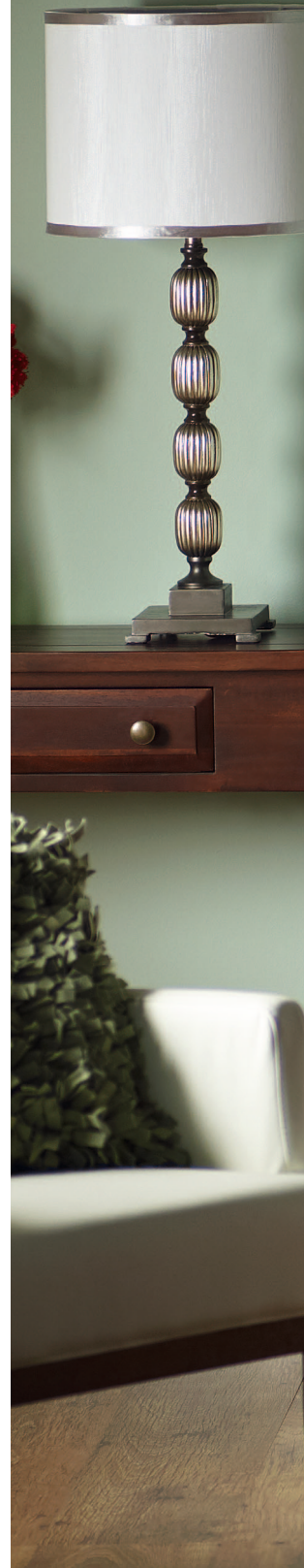
Fire: Planar electric with ceramic coals, brushed steel flat trim & 16" Bauhaus fret polished

Belmonte 48" with Ambient Lighting



The Belmonte 48" with Ambient Lighting in Barley White

Fire: Gradient glass fronted gas convector (slide control) with ceramic coals, Gradient trim satin steel & 16" Bauhaus fret polished





The Belmonte 48" with Ambient Lighting in Mocha Beige

Fire: Balanced flue gas with polished trim & 16" Bauhaus fret

Burwell 44"



The Burwell 44" in Satin Beige

Fire: Oracle Agean Limestone Firebowl, remote control decorative gas with volcanic black ceramic shingle & natural reeded fireboard chamber





The Burwell 44" in Agean Limestone

Fire: Glass fronted gas convector (slide control) with ceramic coals & Capella Fireframe bronze finish



The Burwell 48" in Portuguese Limestone

Fire: Glass fronted gas convector (slide control) with ceramic coals & Mizar Fireframe polished



The Burwell 48" in Barley White

Fire: Planar electric with ceramic coals, brushed steel flat trim & 16" Bauhaus fret polished

Carlton 44"



The Carlton 44" in Agean Limestone

Fire: Open fronted gas convector (slide control), brushed steel trim & 16" Bauhaus fret polished



The Carlton 44" in Mocha Beige

Fire: Gradient glass fronted gas convector (slide control) with ceramic coals, Gradient trim & 16" Bauhaus fret antique brass finish



The Castello 48" in Barley White

Fire: Gradient glass fronted gas convector (slide control) with ceramic coals, Gradient trim satin steel & 16" Bauhaus fret polished



The Castello 48" in Portuguese Limestone

Fire: Glass fronted gas convector (slide control) with ceramic coals & Mizar Fireframe black

Dalton 44"



The Dalton 44'' in Agean Limestone

Fire: Gradient glass fronted gas convector (slide control) with ceramic coals, Gradient trim satin steel & 16'' Bauhaus fret polished



The Dalton 44'' in Barley White

Fire: Open fronted gas convector (slide control) with ceramic coals & Mizar Fireframe polished



The Dalton 44" in Portuguese Limestone

Stove: Sirius Contemporary 450 Inset Cleanburn (Defra approved for burning wood and anthracite in a smoke control areas). Hearth has been cut for multi-fuel



The Deighton 47" in Portuguese Limestone

Fire: Balanced flue gas with polished trim & 16" Bauhaus fret



The Deighton 47" in Satin Beige

Fire: Open fronted gas convector (slide control) with ceramic coals & Flare Fireframe antique brass finish

Easby 48"



The Easby 48" in Portuguese Limestone

Fire: Glass fronted gas convector (slide control) with ceramic coals & Flare Fireframe polished



The Easby 48" in Satin Beige

Fire: Open fronted gas convector (slide control) with ceramic coals & Abri Firefame bronze finish



The Faro 48" in Portuguese Limestone

Fire: Decorative open fronted gas with pebbles, antique brass finish trim & 18" Bauhaus fret



The Faro 48" in Barley White

Fire: Open fronted gas convector (slide control) with ceramic coals & Flare Fireframe polished



The Faro 48" in Mocha Beige

Fire: Glass fronted (slide control) with ceramic coals & Abri Fireframe bronze finish

Faro 48" with Ambient Lighting



The Faro 48" with Ambient Lighting in Mocha Beige

Fire: Open fronted gas convector (slide control) with ceramic coals & Provident Fireframe highlight



The Faro 48" with Ambient Lighting in Barley White

Fire: Glass fronted gas convector (slide control) with ceramic coals & Abri Fireframe polished



The Grande 54" in Portuguese Limestone

Fire: Glass fronted gas convector (slide control) with ceramic coals & Mizar Fireframe antique brass finish



The Grande 54'' in Perla

Fire: Open fronted gas convector (slide control) with ceramic coals, black trim & 16'' Bauhaus fret

LS-26 Low Suite



Ls-26 Low Suite in Agean Limestone

Fire: Boji chrome Firebowl, remote control decorative gas with volcanic black ceramic shingle





Ls-26 Low Suite in Agean Limestone

Fire: Oracle Agean Limestone Firebowl, remote control decorative gas with volcanic black ceramic shingle



The Maderia 48" with Ambient Lighting in Mocha Beige

Fire: Gradient glass fronted gas convector (slide control) with ceramic coals, black Gradient trim & 16" Bauhaus fret

Maderia 48" with Ambient Lighting



The Maderia 48" with Ambient Lighting in Barley White

Fire: Open fronted gas convector (manual control) with ceramic coals & Abri Fireframe polished

Peniche 54"



The Peniche 54'' in Portuguese Limestone

Fire: Gradient glass fronted gas convector (slide control) with ceramic coals, Gradient trim satin steel & 16'' Bauhaus fret polished



The Peniche 54'' in Satin Beige

Fire: Glass fronted gas convector (slide control) with ceramic coals & Flare Fireframe black



The Peniche 54" in Perla

Fire: Open fronted gas convector (slide control) with ceramic coals & Flare Fireframe antique brass finish



The Salazar 48" in Portuguese Limestone

Stove: Sirius Contemporary 450 Inset Cleanburn (Defra approved for burning wood and anthracite in a smoke control area). Hearth has been cut for multi-fuel



The Salazar 48" in Mocha Beige

Fire: Open fronted gas convector (slide control) with ceramic coals & Capella Fireframe bronze finish



The Salazar 48" in Perla

Fire: Glass fronted gas convector (slide control) with ceramic coals & Mizar Fireframe polished

Swinford 48"



The Swinford 48'' in Agean Limestone

Fire: Decorative open fronted gas with ceramic coal, brushed steel trim & 18" Bauhaus fret polished



The Swinford 48'' in Satin Beige

Fire: Open fronted gas convector (slide control) with ceramic coals & Flare Fireframe polished



The Swinford 48" in Portuguese Limestone

Fire: Glass fronted gas convector (slie control) with ceramic coals & Capella Fireframe polished



The Woodbridge 48" in Portuguese Limestone

Fire: Open fronted gas convector (slide control) with ceramic pebbles & Mizar Fireframe polished

Woodbridge 48"



The Woodbridge 48" in Satin Beige

Fire: Open fronted gas convector (manual control) with ceramic pebbles & Abri Fireframe bronze finish

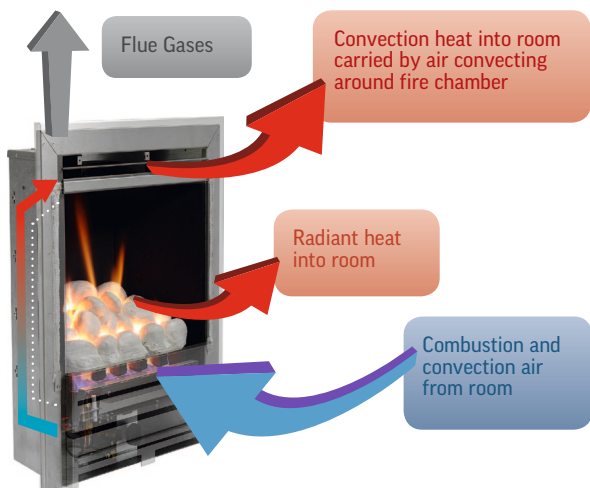
Choosing Your Fire

You have decided upon the style and design of the fireplace that best suits your needs and now its time to choose your fire.

The efficiency of your fire may play a huge factor in the decision making process so we feel it is important to explain the differences of efficiency and what that means in terms of energy and environmental costs.

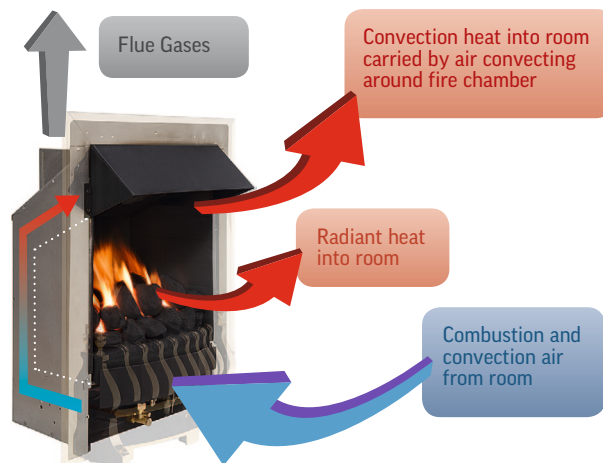
Capital Fireplaces offer five fire options, over the next two pages we show product examples and explain key features about the products.

GLASS FRONTED GAS CONVECTOR FIRE



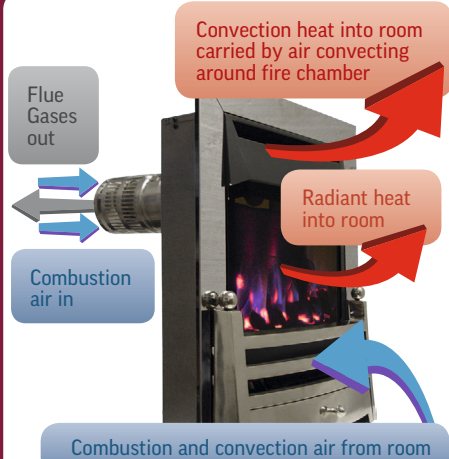
- Up to 89% Efficient
- Up to 4.4kw Heat Output
- One of the most efficient fires available to buy
- Glass front helps provide high glow in ceramic fuel bed at low settings
- Glass front stops heat from your room being lost up the chimney when the fire is switched off

OPEN FRONTED GAS CONVECTOR FIRE



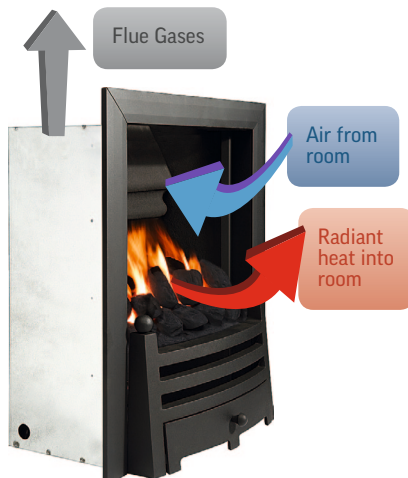
- Up to 65% Efficient
- Up to 4kw Heat Output
- One of the most efficient open fronted gas fires on the market.
- Available in slide or manual control

BALANCED FLUE GAS INSET FIRE



- Up to 75% efficient
- Up to 2.8kW Heat Output
- Suitable for homes without a chimney

DECORATIVE OPEN FRONTED GAS FIRE



- Up to 50% Efficient
- Up to 3.5kw Heat Output
- Realistic Natural look

ELECTRIC FIRE




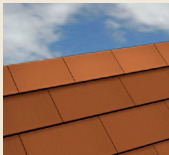


- 99% Efficient
- 1.5kW Heat Output
- Realistic Flame Effect
- Suitable for homes without a chimney

Gas Fires - Gas fires are similar to gas boilers in that they must be fitted by appropriately qualified and registered installers (GAS SAFE - formerly known as CORGI) and must be serviced regularly by a suitably qualified and registered person.

Fires

Table 1

											
CLASS 1 Commonly in older houses, earlier than 1960. The Class 1 chimney is identifiable by 7" (180mm) or greater diameter flue. The existing chimney must be structurally sound, please check before the installation of a new fireplace.			CLASS 2 Either an older house where the existing chimney has been lined by a proprietary steel flue or a newer house with a steel flue built in. This chimney type is identifiable by a 5" (130 mm) diameter flue and a steel flue terminal.			PRE-CAST FLUE Modern houses generally later than 1960 often have a pre-cast concrete chimney system, identifiable by a rectangular box section flue and a terminal, as illustrated in the picture.			NO CHIMNEY Modern houses often have no chimney. You can use a modern decorative electric fire, either with no heat for aesthetics or an efficient fire with up to 2kW heat output.		
NGLPGELECTRIC			NGLPGELECTRIC			NGLPGELECTRIC			BALANCED FLUEELECTRIC		

Fireframes



ABRI



CAPELLA

ABRI & CAPELLA FIREFRAMES

FINISHES:
• ANTIQUE BRASS
• BLACK
• BRONZE
• CHROME
• POLISHED



FLARE



MIZAR

FLARE & MIZAR FIREFRAMES

FINISHES:
• ANTIQUE BRASS
• BLACK
• BRONZE
• CHROME
• POLISHED



PROVIDENT FIREFRAME HIGHLIGHT

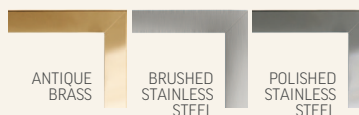
Standard Trim finishes



Gradient Trim finishes



Flat Trim finishes



Fret options



BAUHAUS®
ANTIQUÉ BRASS FINISH
AVAILABLE IN 16" & 18"



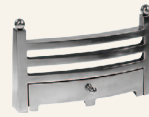
BAUHAUS®
BLACK
AVAILABLE IN 16" & 18"



BAUHAUS®
CHROME FINISH
AVAILABLE IN 16" & 18"



BAUHAUS®
DIAMOND BLACK
AVAILABLE IN 16" & 18"



BAUHAUS®
POLISHED
AVAILABLE IN 16" & 18"



BLENHEIM
ANTIQUÉ BRASS FINISH
AVAILABLE IN 16"



BLENHEIM
HIGHLIGHT
AVAILABLE IN 16"

FIRE	TECHNICAL				CERAMICS		FIREFRAMES				GRADIENT TRIM	STANDARD TRIM				FLAT TRIM		FRETS					
	MAX. EFFICIENCY	INSET DEPTH	MAX. OUTPUT	INPUT	COALS	PEBBLES	ABRI	CAPELLA	FLARE	MIZAR	ANTIQUE BRASS	SATIN STEEL	BLACK	ANTIQUE BRASS	BRUSHED STAINLESS STEEL	POLISHED STAINLESS STEEL	DIAMOND BLACK	ANTIQUE BRASS	BRUSHED STAINLESS STEEL	POLISHED STAINLESS STEEL	16" BAUHAUS	16" BAUHAUS	BLENHEIM
OPEN FRONTED CONVECTOR GAS FIRE (CLASS 1)	64.8%	235mm	4.0kW	6.9kW	✓	✓	✓	✓	✓	✓				✓	✓	✓	✓				✓	✓	✓
OPEN FRONTED CONVECTOR GAS FIRE (CLASS 2)	62.8%	135mm	3.4kW	6.0kW	✓	✓	✓	✓	✓	✓				✓	✓	✓	✓				✓	✓	✓
GLASS FRONTED CONVECTOR (SLIDE CONTROL)	88.7%	185mm	4.4kW	5.0kW	✓		✓	✓	✓	✓				✓	✓	✓	✓				✓	✓	✓
GRADIENT GLASS FRONTED CONVECTOR (SLIDE CONTROL)	79.5%	195mm	3.5kW	5.5kW	✓						✓	✓	✓								✓	✓	✓
BALANCED FLUE GAS FIRE	75.0%	145mm	2.8kW	3.8kW	✓														✓		✓		
DECORATIVE OPEN FRONTED GAS FIRE	50.0%	245mm	3.5kW	6.9kW	✓	✓								✓	✓	✓	✓				✓	✓	✓
PLANAR ELECTRIC INSET FIRE (REMOTE CONTROL)	99.0%	75mm	1.5kW	1.5kW	✓														✓	✓	✓	✓	✓
ELECTRIC INSET FIRE (REMOTE CONTROL)	98.0%	75mm	2kW	2kW	✓	✓								✓	✓	✓	✓				✓	✓	✓

Log baskets



Bampton
1338 (530 W)



Cradle
0302 (610 W)



Edgecott
1137 (560 W)



Lago
Glass (670 W)



Log Hoop
0319 (610 DIA)



Rushden
1336 (530 W)



Savona
Glass (355 W)



Tanner
0303 (355 W)

Coal Buckets



Dorset
1318 Black
(540 H)



Henley
1397 Black/Pewter
(410 H)



Henley
1377 Black/Gold
(410 H)

Companion Sets



Asti
Glass (670 H)



Catalan
1181 - Black (740 H)



Lecco
Glass (695 H)



Log Station
0317 Black (730 H)



Sienna
Glass (665 H)



Tee set
1147 Black (540 H)



Trio
1146 - Black (450 H)



Trio
1148 - Pewter (450 H)

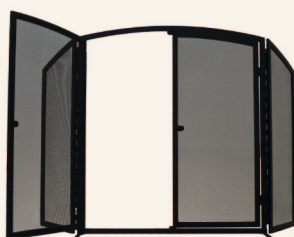


Village
1102 Black (680 H)

Spark Guards



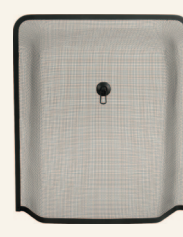
Cotswold
1786 - Black
(710 H x 620 W)



Gateway
1769 - Black
(760 H x 690 W
Wings 260 W)

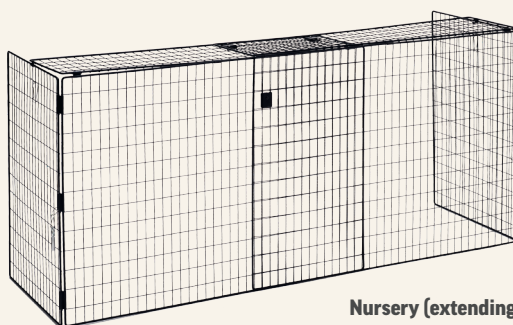


Malvern
1787 - Black (610 H x 540 W)
1788 - Black (710 H x 610 W)



Windsor
2001 - Black
(620 H x 530 W)

Fire Guard



Nursery (extending)
1992 - Black
(950 W to 1740 W x 660 H)

Suite Materials Explained



Agean Limestone

Agean Limestone

Limestone is a sedimentary rock built up over 60 million years during the Jurassic era of the carboniferous age. Made up of tiny organisms with whisps of plant life and some larger crustaceans occasionally intermingling at the sea bed it is easy to imagine how the fossil patterns build up in this stone. No natural products can present a completely consistent finish, so we can guarantee that each fireplace is unique. We make as much effort as is economically sensible by limiting darker fossils to the less obtrusive areas of the fireplace (sides of legs) and limit them to being no larger than a UK five penny piece on the front facing areas of the fireplace. Fossils that are of a similar colour to the general background matrix will appear anywhere on the fireplace. Small holes (vents), light veins and grains are features of the limestone and are also normally found in your fireplace.

The Agean Limestone suites in this brochure come with complete matching hearth and three-piece back panel.



Portuguese Limestone

Portuguese Limestone

This is natural stone, cut straight from the earth. The stone is sedimentary limestone formed over 50 million years ago. The characteristic darker veins on the light background, intermingled with fossils of plants and animal life all add to the beauty and individuality of this great material.

To find 'blooms', lighter and darker veins, 'whisps' of fossilised fern leaves and other unique features are not considered as defects but are part of the experience of owning a Portuguese Limestone suite.

The Portuguese Limestone suites in this brochure come with complete matching hearth and three-piece back panel.

Micromarble

An engineered stone, manufactured from crushed marble and specially developed resins, is used to make the suites shown in this brochure.

The Belmonte 42, The Burwell 44 and The Dalton 44 are supplied with a three piece back panel whilst the remainder can be supplied with single piece back panels. Each suite is sold with its matching hearth.



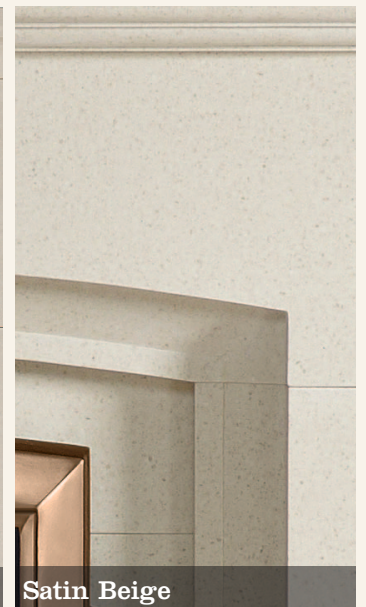
Barley White



Mocha Beige



Perla



Satin Beige

Complete range of suites at a glance



Acombe 48"



Belmonte 42"



Belmonte 48"



Belmonte 48"
(Ambient lighting)



Burwell 44"



Burwell 48"



Carlton 44"



Castello 48"



Dalton 44"



Deighton 47"



Easby 48"



Faro 48"



Faro 48"
(Ambient lighting)



Grande 54"



LS-26 Low Suite



Maderia 48"
(Ambient lighting)



Peniche 54"



Salazar 48"



Swinford 48"



Woodbridge 48"

	ACOMBE 48 (AMBIENT LIGHTING)	BELMONTÉ 42	BELMONTÉ 48	BELMONTÉ 48 (AMBIENT LIGHTING)	BURWELL 44	BURWELL 48	CARLTON 44	CASTELLO 48	DALTON 44	DEIGHTON 47	EASBY 48	FARO 48 (AMBIENT LIGHTING)	GRANDE 54	LS-26 LOW SUITE	MADERIA 48 (AMBIENT LIGHTING)	PENICHE 54	SALAZAR 48	SWINFORD 48	WOODBIDGE 48
AGEAN LIMESTONE					✓		✓		✓					✓				✓	
PORTUGUESE LIMESTONE		✓	✓			✓		✓	✓	✓	✓	✓	✓			✓	✓	✓	✓
BARLEY WHITE	✓	✓	✓	✓		✓		✓	✓			✓	✓		✓				
MOCHA BEIGE	✓	✓	✓	✓			✓					✓	✓		✓		✓		
PERLA	✓												✓			✓	✓		
SATIN BEIGE					✓					✓	✓					✓		✓	✓

Suite Dimensions

Choosing a suite or mantel

STEP ONE:

Measure the width of your chimney breast.

STEP TWO:

Select a suite that has a shelf and hearth width less than your chimney breast width. (Dimensions A and J in Table 1 below).

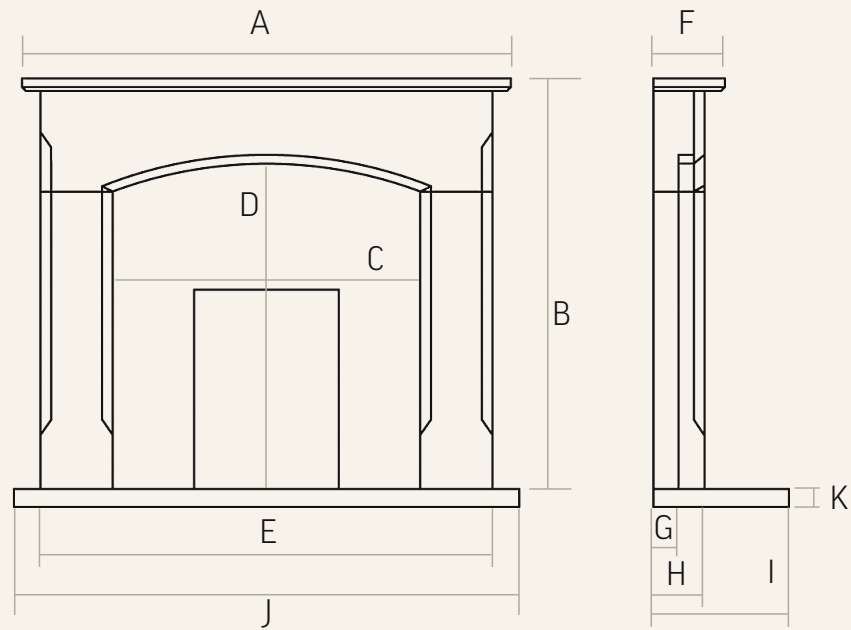


TABLE 1												
		A	B	C	D	E	F	G	H	I	J	K
ACOMBE 48 (AMBIENT LIGHTING)	mm	1220	1078	690	805	1140	205	25	165	380	1220	50
BELMONTE 42	mm	1066	965	690	755	990	160	75	125	380	1066	50
BELMONTE 48	mm	1220	1000	760	760	1120	150	75	115	380	1220	50
BELMONTE 48 (AMBIENT LIGHTING)	mm	1220	1000	760	760	1120	150	25	115	380	1220	50
BURWELL 44	mm	1120	930	586	690	1005	180	75	145	380	1105	50
BURWELL 48	mm	1220	875	710	687	1111	195	75	146	380	1220	50
CARLTON 44	mm	1100	915	595	675	975	185	75	130	380	1100	60
CASTELLO 48	mm	1220	1019	760	800	1120	180	75	145	380	1220	50
DALTON 44	mm	1120	920	610	670	1010	195	75	135	380	1120	60
DEIGHTON 47	mm	1190	936	810	699	1086	175	75	136	380	1190	50
EASBY 48	mm	1220	923	810	732	1134	175	75	134	380	1220	60
FARO 48	mm	1220	1040	762	810	1150	180	75	140	380	1220	50
FARO 48 (AMBIENT LIGHTING)	mm	1220	1040	762	810	1150	180	25	140	380	1220	50
GRANDE 54	mm	1370	1120	804	866	1270	200	75	150	380	1370	50
LS-26 LOW SUITE	mm	1160	725	660	405	1160	75	n/a	75	365	1160	100
MADERIA 48 (AMBIENT LIGHTING)	mm	1220	1035	760	815	1120	200	25	143	380	1220	50
PENICHE 54	mm	1370	1113	865	840	1265	200	75	143	380	1370	50
SALAZAR 48	mm	1220	1048	720	800	1120	200	75	164	380	1220	50
SWINFORD 48	mm	1220	1030	720	810	1120	200	75	150	380	1220	50
WOODBIDGE 48	mm	1220	923	810	732	1124	176	75	134	380	1220	60

- NOTES**
- 1 – Suite title measurement refers to the widest part of the suite
 - 2 – One piece back panel opening dimensions are: 420mm Wide x 570mm High. Three piece back panels have an adjustable opening width
 - 3 – ALL Agean limestone and Portuguese limestone models come complete with their hearths and three-piece back panels
 - 4 – The BELMONTE 42, BURWELL 44 and the DALTON 44 models come supplied with three-piece back panels in all materials
 - 5 – The Micromarble suites (except the BELMONTE 42, BURWELL 44 and DALTON 44) come with single piece back panels