


THE GALLERY COLLECTION



Original Gallery Collection products are  (anti copying in design) registered, and are therefore protected by UK design right. We will not compromise on quality, neither should you, so in order for you to receive products manufactured to the highest possible standards, insist only on a genuine Gallery Collection Fireplace.



DEALER STAMP

www.galleryfireplaces.co.uk

THE GALLERY COLLECTION



THE
GALLERY
COLLECTION

WELCOME TO THE GALLERY COLLECTION

The Gallery Collection presents an extensive range of traditional and contemporary fireplaces, combining supreme craftsmanship, quality materials and elegance in design.

Our desire is to provide you with a superb choice of fireplaces skillfully made with high quality materials, all fitted in your home by reputable retailers so you can enjoy the experience of buying and owning your individual fireplace.

The **FIRES & SUITES** within this brochure represent classic fireplace designs, aimed to complement a variety of interior styles. All ten designs are available in Portuguese limestone and six of the designs are also available in one of our micromarble finishes.

We hope this wide choice will allow you to select your favourite design and finish.

A suite consists of the mantel, back panel and hearth. We have pictured our suite designs in a variety of option to demonstrate some of the many different combinations that can be achieved.

Every suite in this brochure can be fitted against a flat wall without a chimney, if chosen with an electric fire, all that is required is a power point.

We have generally shown the suites with gas and electric fire options, if burning solid fuel is your preference then please select a Portuguese Limestone suite and ask for a solid fuel hearth or refer to our other brochures. For a complete selection of suitable products please see our **FIREPLACES** brochure for a great range of cast iron inserts and the **STOVES & FIREBASKETS** brochure for a superb range of stoves and firebaskets.

CONTENTS

- 04 CARTMEL 48
- 05 CARTMEL 48 with Under Mantel Lighting
- 06 CLIFTON 42
- 08 CONISTON 54
- 10 COPELAND 48
- 11 COPELAND 48 with Under Mantel Lighting
- 12 CRANBOURNE 44
- 14 DACRE 54
- 16 DURRINGTON 42
- 18 DURRINGTON 48
- 20 ELLERBY 48
- 22 KENDAL 48
- 24 RYDAL 48
- 26 SUITE MATERIALS EXPLAINED
- 27 SWATCHES
- 28 CHOOSING YOUR FIRE
- 30 TRIM & FRET OPTIONS
- 31 FIREFRAME OPTIONS
- 32 SUITES - RANGE AT A GLANCE
- 34 FIRE AND SUITE SUITABILITY
- 35 FOCUS ON QUALITY

FRONT COVER IMAGE: CARTMEL IN POLAR WHITE WITH UNDER MANTEL LIGHTING AND GLASS FRONTED GAS CONVECTOR FIRE & SOLARIS FIREFRAME CHROME FINISH.

REAR COVER IMAGE: CRANBOURNE IN MOCHA BEIGE WITH GLASS FRONTED GAS CONVECTOR FIRE & AURORA FIREFRAME CHROME FINISH



ELLERBY 48 Perla

FIRE: GLASS FRONTED GAS CONVECTOR FIRE (SLIDE CONTROL) WITH CERAMIC COALS, BRUSHED STEEL TRIM & 1 1/2" BAUHAUS FRET POLISHED



CARTMEL 48 Chiltern
FIRE: GLASS FRONTED GAS CONVECTOR FIRE (SLIDE CONTROL)
WITH CERAMIC COALS & SOLARIS FIREFRAME ANTIQUE BRASS FINISH



CARTMEL 48 Mocha Beige
FIRE: GLASS FRONTED GAS CONVECTOR FIRE (SLIDE CONTROL)
WITH CERAMIC COALS & SOLARIS FIREFRAME CHROME FINISH



CARTMEL 48 Portuguese Limestone
FIRE: DECORATIVE OPEN FRONTED GAS FIRE WITH CERAMIC
COALS ANTIQUE BRASS FINISH TRIM & 18" BAUHAUS FRET



CARTMEL 48 (with Under mantel lighting) Polar White
FIRE: GLASS FRONTED GAS CONVECTOR (SLIDE CONTROL) WITH CERAMIC COALS & SOLARIS FIREFRAME CHROME



CARTMEL 48 (with Under mantel lighting) Mocha Beige
FIRE: GLASS FRONTED GAS CONVECTOR (SLIDE CONTROL) WITH CERAMIC COALS & LUNAR FIREFRAME HIGHLIGHT



CLIFTON 42 Portuguese Limestone
FIRE: ELECTRIC INSET, POLISHED TRIM & 16" BAUHAUS FRET CHROME FINISH



CLIFTON 42 SUITE Cotswold
FIRE: OPEN FRONTED GAS CONVECTOR FIRE (SLIDE CONTROL) WITH CERAMIC COALS & LUNAR HIGHLIGHT FIRE FRAME



CLIFTON 42 Perla
FIRE: GLASS FRONTED GAS CONVECTOR FIRE (SLIDE CONTROL) WITH CERAMIC COALS & AURORA FIREFRAME ANTIQUE BRASS FINISH



CONISTON 54 Chiltern

FIRE: GLASS FRONTED GAS CONVECTOR FIRE (SLIDE CONTROL)
WITH CERAMIC COALS & LUNAR HIGHLIGHT FIRE FRAME



CONISTON 54 Perla

FIRE: OPEN FRONTED GAS CONVECTOR FIRE (SLIDE CONTROL)
WITH CERAMIC COALS, BLACK TRIM & 16" CLEVEDON FRET



CONISTON 54 Portuguese Limestone

STOVE: TIGER GAS, CHAMBER: NATURAL REEDED FIREBOARD (SLIPS NOT SHOWN),
HEARTH: PORTUGUESE LIMESTONE, BACK HEARTH: PORTUGUESE LIMESTONE



COPELAND 48 Portuguese Limestone

BASKET: QUEEN ANNE HIGHLIGHT, **FIRE:** DECORATIVE GAS FIRE WITH CERAMIC COALS

CHAMBER: NATURAL REEDED FIREBOARD (SLIPS NOT SHOWN), **HEARTH & BACK HEARTH:** PORTUGUESE LIMESTONE



COPELAND 48 (with Under Mantel Lighting) Polar White

FIRE: OPEN FRONTED GAS CONVECTOR (MANUAL CONTROL) WITH CERAMIC COALS & SOLARIS FIREFRAME CHROME



COPELAND 48 (with Under Mantel Lighting) Mocha Beige

FIRE: GLASS FRONTED GAS CONVECTOR (SLIDE CONTROL) WITH CERAMIC COALS & AURORA FIREFRAME CHROME



CRANBOURNE 44 Portuguese Limestone

FIRE: OPEN FRONTED GAS CONVECTOR FIRE WITH CERAMIC COALS & AURORA FIREFRAME BLACK



CRANBOURNE 44 SUITE Chiltern

FIRE: DECORATIVE OPEN FRONTED GAS FIRE WITH CERAMIC COALS, BRUSHED TRIM & POLISHED 16" CLEVEDON FRET



CRANBOURNE 44 Mocha Beige

FIRE: GLASS FRONTED GAS CONVECTOR FIRE (SLIDE CONTROL) WITH CERAMIC COALS, POLISHED TRIM & 16" BAUHAUS FRET CHROME



DACRE 54 SUITE Cotswold

FIRE: DECORATIVE OPEN FRONTED GAS CONVECTOR FIRE WITH ANTIQUE BRASS TRIM & 16" BLENHEIM FRET



DACRE 54 Portuguese Limestone

FIRE: OPEN FRONTED GAS CONVECTOR FIRE WITH CERAMIC PEBBLES & SOLARIS FIREFRAME CHROME FINISH



DURRINGTON 42 Mocha Beige
FIRE: OPEN FRONTED GAS CONVECTOR FIRE WITH CERAMIC COALS & DIAMOND BLACK TRIM AND 16" BAUHAUS FRET



DURRINGTON 42 SUITE Chiltern
STOVE: FIREFOX 5 GAS, CHAMBER: NATURAL REEDED FIREBOARD (SLIPS NOT USED), HEARTH: CHILTERN, BACK HEARTH: GRANITE



DURRINGTON 42 Portuguese Limestone
FIRE: GLASS FRONTED GAS CONVECTOR FIRE WITH CERAMIC COALS & AURORA FIREFRAME CHROME FINISH



DURRINGTON 48 Portuguese Limestone
FIRE: ELECTRIC INSET FIRE WITH ANTIQUE BRASS FINISH TRIM & 16" BAUHAUS FRET



DURRINGTON 48 Chiltern
FIRE: DECORATIVE OPEN FRONTED GAS FIRE WITH BLACK TRIM & 16" EMPEROR FRET



DURRINGTON 48 Mocha Beige
FIRE: OPEN FRONTED GAS CONVECTOR FIRE WITH CERAMIC PEBBLES & LUNAR FIREFRAME HIGHLIGHT



ELLERBY 48 Portuguese Limestone

FIREBASKET: SMALL CRADLE POLISHED (REVERSIBLE), **FIRE:** REAL LOGS,
CHAMBER: NATURAL REEDED FIREBOARD, **BACK HEARTH:** PORTUGUESE LIMESTONE
*HEARTH & BACK HEARTH SLABBED FOR MULTI FUEL



ELLERBY 48 Perla

FIRE: GLASS FRONTED GAS CONVECTOR FIRE (SLIDE CONTROL) WITH CERAMIC COALS, BRUSHED STEEL TRIM & 16" BAUHAUS FRET POLISHED



KENDAL 54 Chiltern (sold as mantel only)
BASKET: ART DECO POLISHED, FIRE: DECORATIVE GAS FIRE WITH CERAMIC COALS,
CHAMBER: NATURAL REEDED FIREBOARD (PAINTED BLACK), SLIPS, HEARTH & BACK HEARTH: GRANITE POLISHED



KENDAL 54 Cotswold
FIRE: OPEN FRONTED GAS CONVECTOR FIRE WITH CERAMIC COALS & LUNAR FIREFRAME HIGHLIGHT



KENDAL 48 Portuguese Limestone
FIRE: GLASS FRONTED GAS CONVECTOR FIRE (SLIDE CONTROL) WITH CERAMIC COALS & SOLARIS FIREFRAME ANTIQUE BRASS FINISH



RYDAL 48 Polar White

FIRE: GLASS FRONTED GAS CONVECTOR FIRE (SLIDE CONTROL)
WITH CERAMIC COALS & LUNAR HIGHLIGHT FRAME



RYDAL 48 Perla

FIRE: ELECTRIC INSET WITH DIAMOND BLACK TRIM AND 16" BAUHAUS FRET



RYDAL 48 Portuguese Limestone

FIRE: GLASS FRONTED GAS CONVECTOR FIRE (SLIDE CONTROL)
WITH CERAMIC COALS & AURORA FIREFRAME ANTIQUE BRASS FINISH

PORTUGUESE LIMESTONE

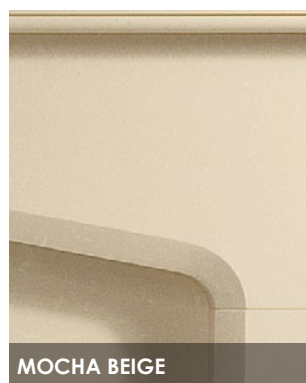


This is natural stone, cut straight from the earth. The stone is sedimentary limestone formed over 50 million years ago. The characteristic darker veins on the light background, intermingled with fossils of plants and animal life all add to the beauty and individuality of this great material.

To find 'blooms', lighter and darker veins, 'whisps' of fossilised fern leaves and other unique features are not considered as defects but are part of the experience of owning a Portuguese Limestone suite. All the suites shown in this brochure can be purchased, made from PORTUGUESE LIMESTONE and come complete with matching hearth and three-piece back panel.

AVAILABLE IN ALL SUITE DESIGNS (EXCEPT THOSE WITH UNDER MANTEL LIGHTING)

MICROMARBLE – MOCHA BEIGE – POLAR WHITE & PERLA



AVAILABLE IN SUITES: **THE CARTMEL, THE COPELAND, THE DURRINGTONS (42 & 48) & THE CRANBOURNE**



AVAILABLE IN SUITES: **THE CLIFTON, THE CONISTON, THE RYDAL, & THE ELLERBY**



AVAILABLE IN SUITES: **THE CARTMEL WITH UNDER MANTEL LIGHTING, THE COPLAND WITH UNDER MANTEL LIGHTING & THE RYDAL**

An engineered stone, manufactured from crushed marble and specially developed resins, is used to make the suites shown in this brochure.

The Clifton, The Durrington 42 and The Cranbourne are supplied with a three piece back panel whilst the remainder can be supplied with single piece back panels. Each suite is sold with its matching hearth.

JURA-STONE – COTSWOLD & CHILTERN



AVAILABLE IN SUITES: **THE CLIFTON, THE DACRE & THE KENDAL**



AVAILABLE IN SUITES: **THE CARTMEL, THE CONISTON, THE DURRINGTONS (42 & 48), THE CRANBOURNE, & THE KENDAL**

Another natural product, marble, is used in the construction of these suites. JURA-STONE is made from aesthetically unappealing sheets of solid marble and then coated with one of two great finishes. These finishes are the smooth Cotswold and the slightly textured Chiltern. Both finishes give a consistent appearance of stone.

The Clifton, The Durrington 42 and The Cranbourne are supplied with a three piece back panel whilst the remainder can be supplied with single piece or three piece back panels. Each suite is sold with its matching hearth.

To help further with the differences in the materials shown in this brochure, please refer to the opposite page. If colour is critical to you then please discuss this with your retailer



MOCHA BEIGE



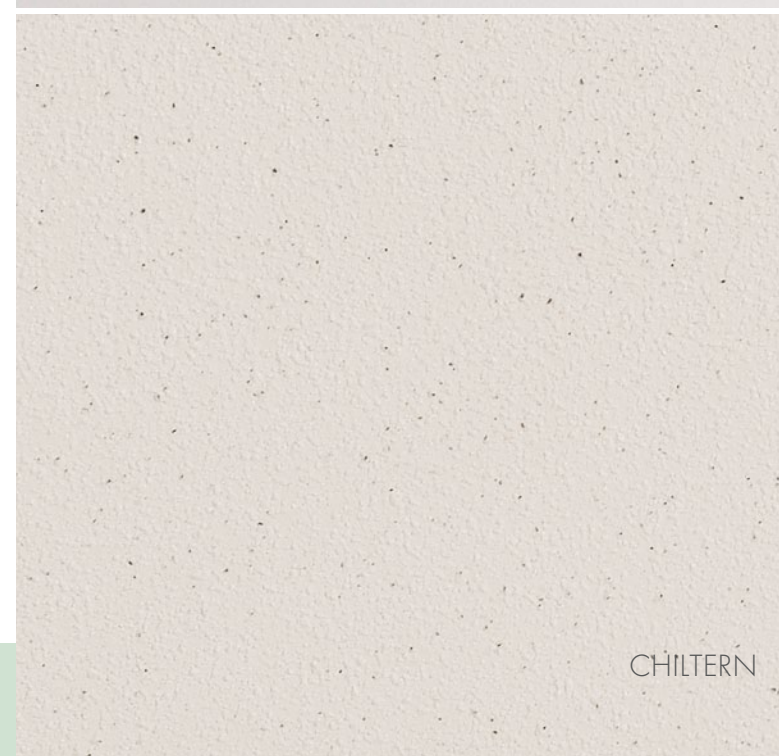
PERLA



POLAR WHITE



PORTUGUESE LIMESTONE



CHILTERN



COTSWOLD

CHOOSING YOUR FIRE

You have decided upon the style and design of the fireplace that best suits your needs and now its time to choose your fire.

The efficiency of your fire may play a huge factor in the decision making process so we feel it is important to explain the differences of efficiency and what that means in terms of energy and environmental costs.

The Gallery Collection offer five fire options, over the next four pages we show product examples and explain key features about the products.

GLASS FRONTED GAS CONVECTOR FIRE

- Up to 89% Efficient
- Up to 4.4kW Heat Output
- One of the most efficient fires available to buy
- Glass front helps provide high glow in ceramic fuel bed at low settings
- Glass front stops heat from your room being lost up the chimney

OPEN FRONTED GAS CONVECTOR FIRE

- Up to 65% Efficient
- Up to 4kW Heat Output
- One of the most efficient open fronted gas fires on the market.
- Available in slide or manual control

BALANCED FLUE GAS INSET FIRE

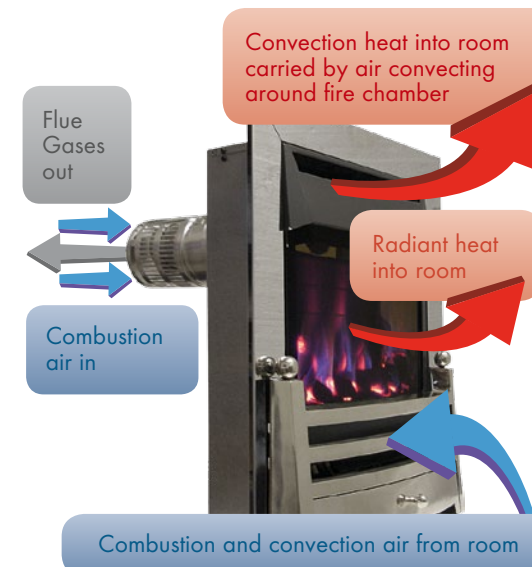
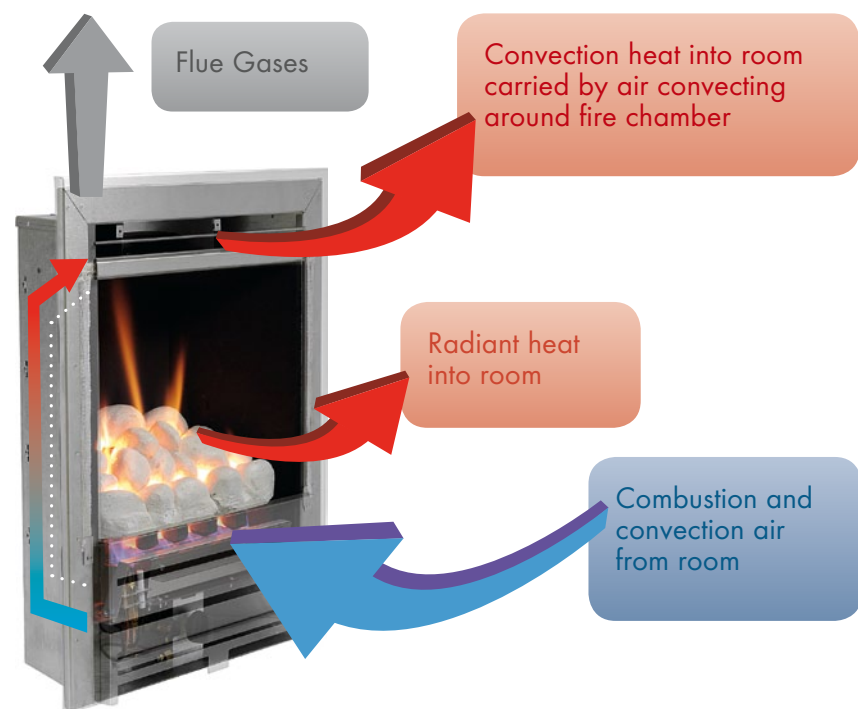
- Up to 75% efficient
- Up to 2.8kW Heat Output
- Suitable for homes without a chimney

DECORATIVE OPEN FRONTED GAS FIRE

- Up to 50% Efficient
- Up to 3.5kW Heat Output
- Realistic Natural look

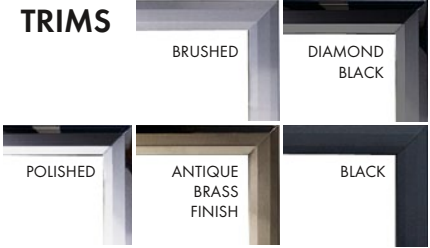
ELECTRIC FIRE

- 100% Efficient
- 1kW or 2kW Heat Output
- Realistic Flame Effect
- Suitable for homes without a chimney



Once you have chosen the type of fire you want its time to decide which frame, fireframe, or trim and fret combination you prefer.

Below is a selection of five fret designs available in various finishes. Simply find a fret you like, combine this with a matching trim, then check the table on page 36 to determine what fires your chosen option is available with.
Note: spacer kits may be required to fit some frames to certain fires.



trim: BLACK
fret: **BALTIMORE**
black



trim: POLISHED
fret: **BALTIMORE**
chrome finish



trim: ANTIQUE BRASS FINISH
fret: **BAUHAUS 16"**
antique brass finish



trim: BLACK
fret: **BAUHAUS 16"**
black

Bauhaus frets are available in 16" & 18".



trim: POLISHED
fret: **BAUHAUS 16"**
chrome finish
Also available in polished finish



trim: DIAMOND BLACK
fret: **BAUHAUS 18"**
diamond black



trim: ANTIQUE BRASS FINISH
fret: **BLENHEIM**
antique brass finish



trim: POLISHED
fret: **BLENHEIM**
highlight

Clevedon, Baltimore & Emperor frets are available in 16" only.



trim: BLACK
fret: **CLEVEDON**
black



trim: BRUSHED
fret: **CLEVEDON**
polished



trim: BLACK
fret: **EMPEROR**
black



trim: BRUSHED
fret: **EMPEROR**
polished

Unlike the trims and frets on the previous page, the Fireframes below are fixed and non interchangeable. They do however come in a range of different finishes so there is sure to be something to suit your particular taste.



fireframe: **AURORA**
chrome finish

Also available in BLACK or ANTIQUE BRASS FINISH



fireframe: **LUNAR**
highlight



fireframe: **SOLARIS**
antique brass finish

Also available in BLACK or CHROME FINISH

The table below explains which Fireframes and Trim & Frets are available for each particular fire.
Note: spacer kits may be required to fit trims to certain fires.

FIRE	TECHNICAL				CERAMICS		FIREFRAMES			FRETS (+TRIMS)						FLAT TRIM
	INPUT	OUTPUT	INSET DEPTH	MAX. EFFICIENCY	COALS	PEBBLES	AURORA	LUNAR	SOLARIS	16" BAUHAUS	18" BAUHAUS	CLEVEDON	EMPEROR	BALTIMORE	BLENHEIM	POLISHED STAINLESS STEEL
TYPE OF FIRE																
CLASS 1 OPEN FRONTED CONVECTOR GAS FIRE	6.9kW	4.0kW	235mm	64.5%	✓	✓	✓	✓	✓	✓	✓	✓	✓	✓	✓	
CLASS 2 OPEN FRONTED CONVECTOR GAS FIRE	6.0kW	3.4kW	135mm	61%	✓	✓	✓	✓	✓	✓	✓	✓	✓	✓	✓	
GLASS FRONTED CONVECTOR (SLIDE CONTROL)	5.0kW	4.4kW	185mm	88.8%	✓		✓	✓	✓	✓	✓		✓			
DECORATIVE OPEN FRONTED GAS FIRE	6.9kW	3.5kW	245mm	50%	✓	✓				✓	✓	✓	✓	✓	✓	
BALANCED FLUE GAS FIRE	3.8kW	2.8kW	145mm	75.0%	✓					✓						✓
INSET ELECTRIC FIRE (REMOTE CONTROL)	2.0kW	2.0kW	75mm	100%	✓	✓				✓	✓	✓	✓	✓	✓	



CARTMEL 48



CLIFTON 42



DURRINGTON 42



DURRINGTON 48



CONISTON 54



COPELAND 48



ELLERBY 48



KENDAL 48



CRANBOURNE 44



DACRE 54



RYDAL 48

CHOOSING A FIRE

STEP ONE:	Identify the chimney type in your house. (From Table below).
STEP TWO:	Decide the type of fire that would suit your chimney and your preferred source of fuel. Ensure that the fire can be matched with a suitable Suite combination.

TABLE 1												
	MF	NG	LPG	ELECTRIC	NG	LPG	ELECTRIC	NG	LPG	ELECTRIC	NG	ELECTRIC
HE GLASS FRONTED SLIDE CONTROL		✓			✓			✓				
CLASS 1 OPEN FRONTED CONVECTOR		✓	✓									
CLASS 2 OPEN FRONTED CONVECTOR					✓	✓		✓	✓			
DECORATIVE INSET		✓	✓		✓	✓						
BALANCED FLUE											✓	
ELECTRIC INSET				✓			✓			✓		✓
BASKETS	✓	✓	✓	✓	✓	✓	✓			✓		✓
STOVES	✓	✓	✓		✓	✓						

CHOOSING A SUITE OR MANTEL

STEP ONE:	Measure the width of your chimney breast.
STEP TWO:	Select a suite that has a shelf and hearth width less than your chimney breast width. (Dimensions A and J in Table 2 below).

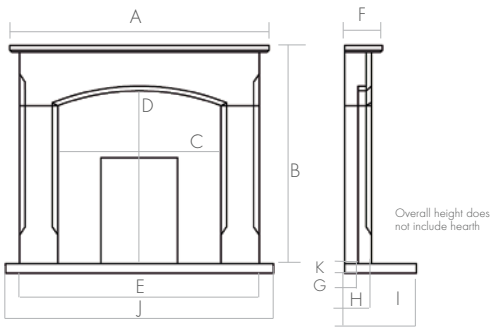


TABLE 2		A	B	C	D	E	F	G	H	I	J	K	PORTUGUESE LIMESTONE	MOCHA BEIGE	PERLA
CARTMEL 48	mm	1220	1040	760	820	1150	180	75	140	380	1220	50	✓	✓	
CONISTON 54	mm	1370	1120	805	865	1270	200	75	150	380	1370	50	✓		✓
COPELAND 48	mm	1220	1035	760	815	1120	190	75	145	380	1220	50	✓		
CRANBOURNE 44	mm	1120	920	620	670	1000	195	75	135	380	1120	50	✓	✓	
DACRE 54	mm	1370	1115	865	840	1265	200	75	145	380	1370	50	✓		
DURRINGTON 42	mm	1066	965	690	755	990	160	75	125	380	1066	50	✓	✓	
DURRINGTON 48	mm	1220	1025	760	765	1120	150	75	115	380	1220	50	✓	✓	
ELLERBY 48	mm	1220	1050	720	800	1120	200	75	176	380	1220	50	✓		✓
KENDAL 48	mm	1220	1030	720	810	1120	200	75	150	380	1220	50	✓		
RYDAL 48	mm	1220	1020	760	800	1120	180	75	145	380	1220	50	✓		

NOTES 1 - All Portuguese limestone models come complete with their hearths and three-piece back panels
2 - The Durrington 42 and the Cranbourne models come supplied with three-piece back panels in all materials
3 - The Perla and Mocha Beige models (except The Durrington 42 and The Cranbourne - see note 2) can be ordered with single piece back panels.

A FOCUS ON SERVICE FOR YOUR PEACE OF MIND

All cast iron products are manufactured in ISO 9002 accredited manufacturing facilities.

All the gas fires we supply are tested in accordance with CE requirements and are CE marked.

Due to the manufacturing processes all measurements are approximate and may vary slightly so allow for a tolerance of plus or minus 12mm.

In order to achieve some of the colour options, we plate the products using a variety of manufacturing processes. When we state that a product is "Antique Brass finish" or "Chrome finish" there is no intention to mislead. The products are not brass or chrome respectively, they are simply plated to give that effect.

MICROMARBLE products are not suitable for solid fuel applications.

The colours shown in the brochures are as accurate as possible, but if the colour you require is critical then please consult your retailer before basing all your decisions on the colours shown here.

Your home may have a chimney type which will allow you to choose any of the fireplaces shown in the brochures. However, please consult the selection charts in the brochures and if you are not clear please consult your HETAS or GAS SAFE REGISTER (Board Gais in ROI) registered installer or your retailer.

Gas fires with a gas input of 6.9kW or less do not normally require air vents, there are some circumstances where vents may be required. This is determined by your installer carrying out a spillage test during the commissioning process. If your chosen fire has a gas input greater than 6.9kW then a vent will be required. Please ask your retailer for further information.

There are occasions when designs, or products are altered or discontinued without prior notice (a reserved right), so if you are about to set your heart on a particular fireplace, please consult your retailer before making that final commitment.

UNDERSTANDING YOUR NEW GALLERY FIREPLACE COMPONENTS AND THEIR AFTERCARE AND MAINTENANCE.

PORTUGUESE LIMESTONE SUITES

Stone is naturally porous, so all visual surfaces have been pre-sealed to help protect the surface from staining. Avoid spillages of coloured liquids such as fruit juices and red wine. In the event of an accident, use a specialist cleaning and resealing kit, following the instructions given by the manufacturer of the kit. Where chipping has occurred, use a fine wet and dry sand paper to blend out as necessary

MICROMARBLE SUITES

Avoid spillages of strong coloured solutions and citrus juices as the acid may etch the surface. To maintain the subtle shine of the surface, occasionally wipe over with a solution of general household cleaner and buff with a soft dry cloth. Do not use any bleach or abrasive cleaning agents as these will scuff or dull the shine.

REASSURANCE BEFORE YOU COMMIT TO THE INSTALLATION OF YOUR GALLERY FIREPLACE.

It is a major project to have a new fireplace installed and it is good practice to try and prepare yourself as well as possible.

All installations must be carried out in accordance with the requirements set out in the Building Regulation documents, in particular, Approved Document J. There are independent bodies which have been approved to carry out installations in accordance with these regulations. For gas installations the most recognised independent body is GAS SAFE REGISTER (Board Gais in ROI) and for solid fuel installations it is HETAS. Please confirm with your retailer that your new fireplace will be installed appropriately. If you have your new fireplace fitted by a GAS SAFE REGISTER (Board Gais in ROI) or HETAS registered fitter you will be given a certificate stating that your installation has been carried out in accordance with the Building Regulations. If you do not have one of these certificates then you will have to arrange for your local Building Control Officer to inspect your installation and approve it.

Whilst there appear to be no definitive regulations available, a sufficient gap must be provided around the basket when placed inside the fire chamber. This is essential because air must be able to flow into the fire in order for the fuel to burn effectively; the flue and fire chamber surfaces must be kept cool to avoid heat damage from the fire and where applicable gas controls need to be freely accessible.

Your Gallery fireplace is made up of a number of different components and it is important to ensure that your installer not only meets the requirements above, but that he also has the necessary experience to fit ALL those components.

In the unlikely event that there is a defect in any of the products shown in this brochure, then a replacement will be supplied without hesitation. Of course, this requires the products to be fully inspected prior to installation as no responsibility for re-fitting or redecoration can be accepted if defective products have been installed. In this case and in the case of accidental damage after installation, in-situ repairs can be made by specialists, subject to prior agreement of terms with your retailer.

GAS FIRES

A gas fire is a technical piece of equipment and, just like a gas boiler needs regular servicing. Please ensure that you have your gas fire serviced regularly by a GAS SAFE REGISTER (Board Gais in ROI) registered installer. This will help you enjoy safe and trouble free enjoyment of your fireplace for years to come and may be a requirement of the Government's Home Information Pack.